



SENEBOGEN



**HIGH-
PERFORMANCE
DEMOLITION
AND DISMANTLING**

DEMOLITION MACHINES



12 – 36 m

CONTENTS



OUR DEMOLITION MACHINES

Take advantage of our demolition solutions for efficient and precise work on cramped construction sites and at heights.

- 04 APPLICATIONS >
- 08 BENEFITS OF SENNEBOGEN DEMOLITION MACHINES >

- 20 PRODUCT OVERVIEW >
- 66 VARIETY FOR DEMOLITION >
- 72 ABOUT SENNEBOGEN >
- 76 SERVICE AND TRAINING >

Information and operation reports on the topic of demolition can also be found at

www.sennebogen.com



THE RIGHT MACHINE FOR EVERY APPLICATION

DEMOLISH BIG THINGS



PRECISE USE EVEN IN CONFINED SPACES

Demolition work is often carried out in urban areas to create space for new construction projects.

Urban demolition sites have special requirements. The working area is often limited and the machines used must have special features. SENNEBOGEN demolition machines are ideally equipped for this work.

ECO-FRIENDLY
AND QUIET
THANKS TO THE
LATEST
TECHNOLOGY



FLEXIBLE

Once in place, the SENNEBOGEN demolition machines hardly need to be moved at all thanks to the 360° mode, the flexible cab and the optional quick-changer for equipment. The mobile version offers even more flexibility.

SPACE-SAVING DESIGN

Thanks to compact dimensions, hydraulic telescopic crawler undercarriage and intelligent self-assembly systems, transport and operation can be mastered just as easily as the use in confined spaces.

LOW EMISSION

The machines are fuel-efficient, eco-friendly and quiet thanks to powerful engines configured to the latest standards – a major advantage when dismantling in inner city areas.

STABLE

The hydraulic telescopic crawler undercarriage ensures maximum stability and safety on site. The tilting and elevating cab also offers an optimal overview.

DEMOLITION RECYCLING PROTECTS THE ENVIRONMENT AND RESOURCES



CONTRIBUTION TO SUSTAINABILITY

Demolition recycling makes an important contribution to sustainable and resource-conserving operations.

STATE-OF-THE-ART DISMANTLING

Thanks to the innovative technology, long reach and performance of the hydraulic machines, even solid structures can be selectively dismantled and the rubble sorted on site.

SAVES TIME AND COSTS

Selective dismantling and sorting on site are essential in modern demolition projects for time and financial reasons.

DEMOLITION AND RECYCLING GROWING TOGETHER

Pre-sorted construction waste (e.g. soil, sand, brick) can be recycled for the most part. Disposal or further processing is significantly more cost-effective than mixed waste.

01 FOCUS ON SAFETY

Thanks to sophisticated features, SENNEBOGEN demolition machines offer maximum safety inside and outside the cab.



» *“Our special machine equipment enables safe working in demolition: for example, with the unique elevating and tilting cabs with optimal overview and the stable, telescopic crawler undercarriage for a maximum outrigger area.”*

SEBASTIAN LOIBL
Sales Manager Demolition

GUARDS ON PISTON RODS AND CYLINDERS

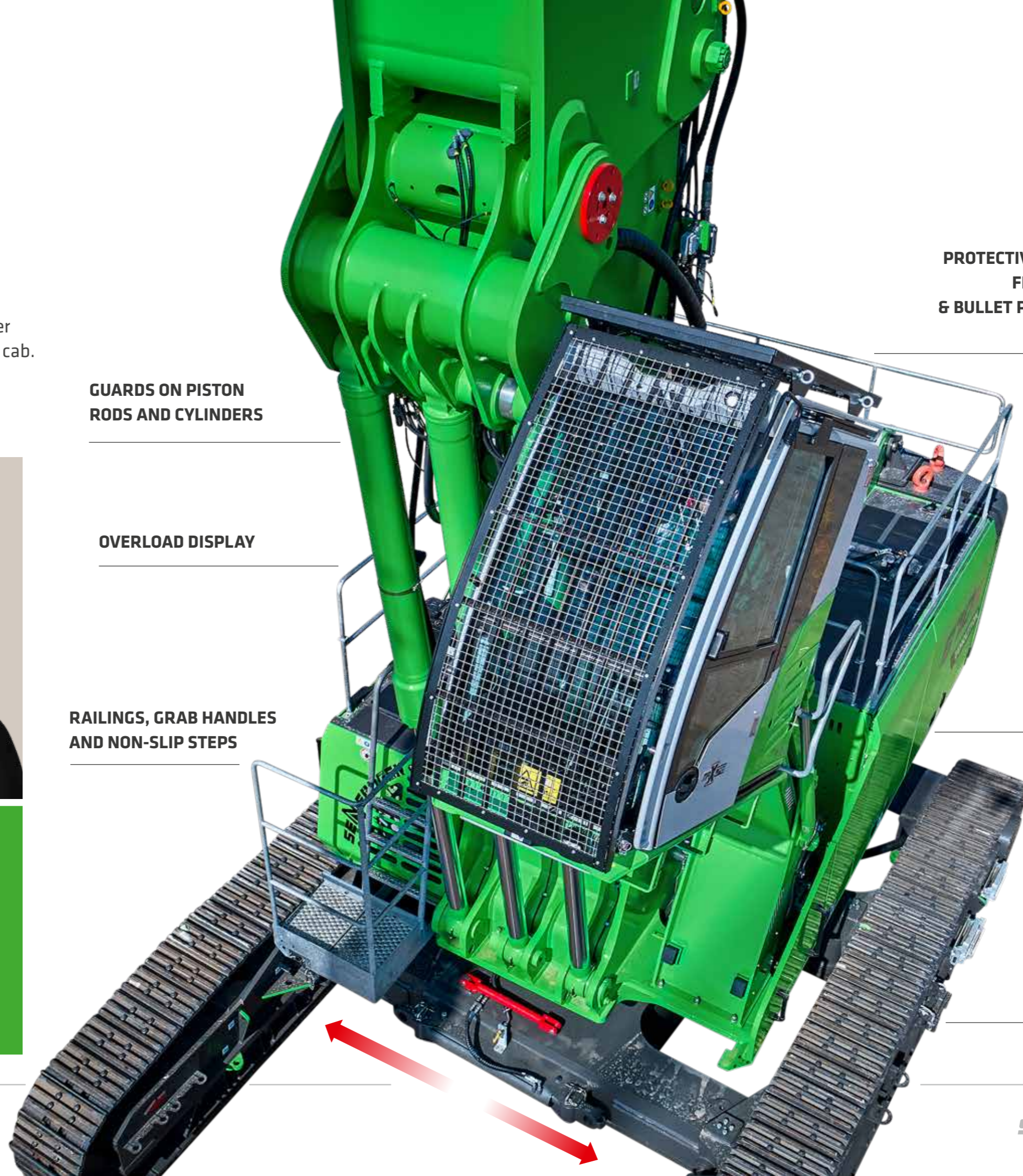
OVERLOAD DISPLAY

RAILINGS, GRAB HANDLES AND NON-SLIP STEPS

PROTECTIVE ROOF AND FRONT GUARD & BULLET PROOF GLASS IN SERIES

ELEVATING CAB TILTABLE UP TO **30°**

HIGH STABILITY THANKS TO TELESCOPIC UNDERCARRIAGE



02 MODULAR DESIGN - VERSATILE SOLUTIONS



SPECIAL REQUIREMENTS? WE HAVE THE SOLUTION.

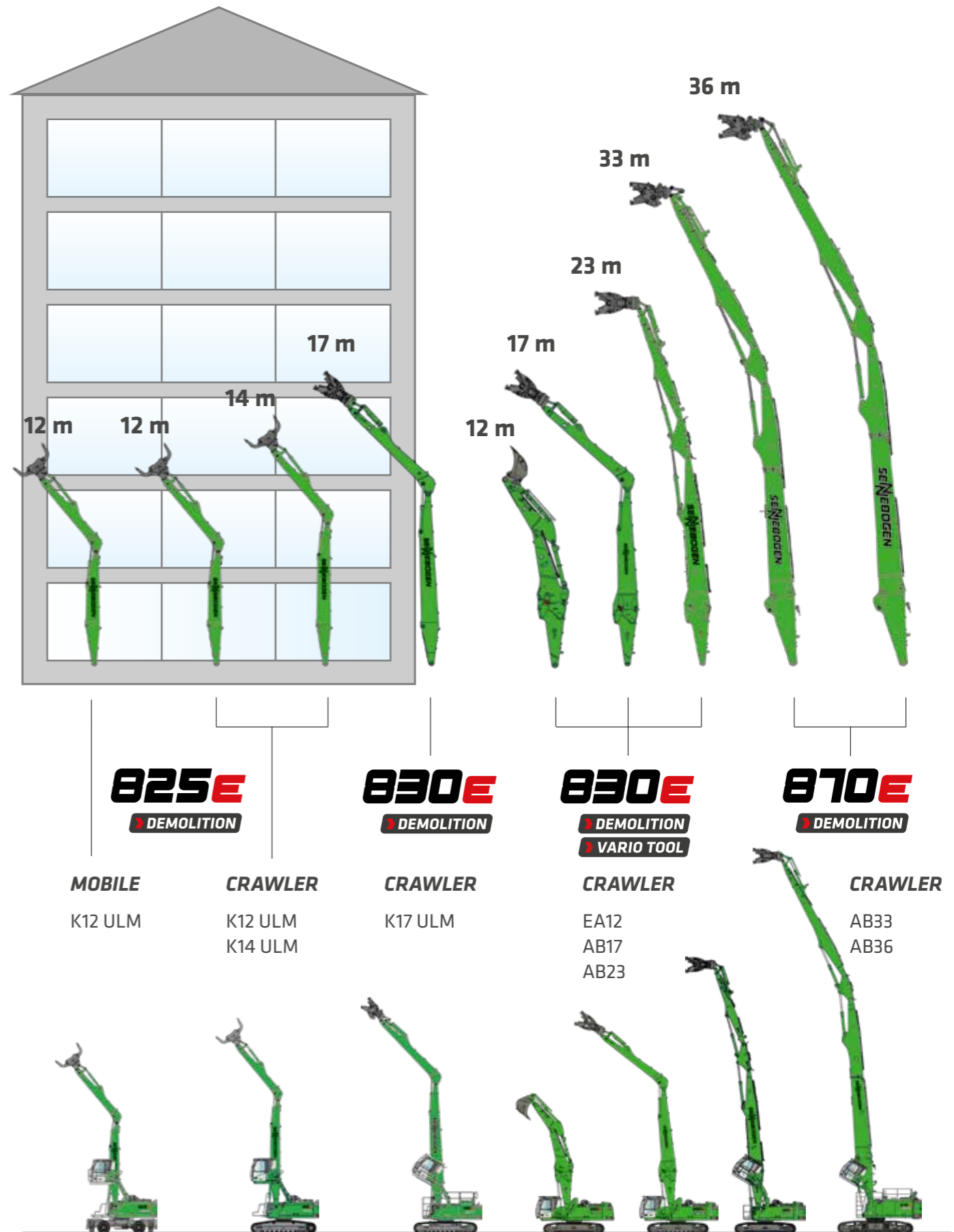
With the tried-and-tested SENNEBOGEN modular system, we create the machine that suits you best - perfectly tailored to your application.

/// We have already equipped your basic machine according to the required standards in demolition and dismantling.

/// You can choose between different equipment depending on the desired application area and the required reach height.

/// With additional options such as chain scraper or sprayer, you get exactly the demolition machine you need.

POSSIBLE EQUIPMENT CONFIGURATIONS



K = Compact boom ULM = Equipment with tipping kinematics AB = Demolition equipment

03 FLEXIBLE AND VERSATILE

MACHINES WITH EQUIPMENT REACH UP TO 36 METERS – FITS ALL YOUR GRABS AND EQUIPMENT

Do you already have one or more pieces of equipment? SENNEBOGEN's demolition machines adapt to your requirements and are suitable for a wide range of equipment thanks to their high performance.

In many cases, you only need one machine for several demolition tasks – and save on transport costs and emissions.



Demolition grab



Demolition hammer



Pulverizer



Demolition shears



Clamshell grab



Orange peel grab

The tools shown serve as possible examples. The selection is made by the customer.

ALL-ROUND SERVICE FOR YOUR DEMOLITION PROJECT

Whether selecting the right machine for your equipment or fitting the equipment with a quick-change system: Your SENNEBOGEN demolition expert will be happy to advise you.



OPTIONS



Quick-changer: Equipment can be changed in short order when the machine is needed for flexible use in sorting and loading materials like rubble, cables or pipes.



Tool control: The volume and pressure of up to ten tools can be conveniently adjusted from the cab.

	PERFORMANCE DATA		
	825 DEMOLITION MOBILE & CRAWLER	830 DEMOLITION CRAWLER	870 DEMOLITION CRAWLER
MAX. SYSTEM PRESSURE	340 bar		345 bar
MAX. VOLUME FLOW (CLOSE GRAB)	320 l/min		420 l/min
MAX. VOLUME FLOW (OPEN GRAB)	285 l/min		385 l/min

04 QUALITY IN SERIES FOR DEMANDING TASKS



LONG SERVICE LIFE, HIGH VALUE RETENTION

Robust, precision crafted steel design and long-lasting hydraulic components.

SIMPLE TO MAINTAIN AND SERVICE

Manageable technology and no over-engineering, ideal accessibility to all components.

SOPHISTICATED, STATE-OF-THE-ART TECHNOLOGY

In the 6th generation – decades of experience in designing and constructing material handling and demolition machines.

ENVIRONMENTALLY FRIENDLY OPERATION

State-of-the-art engine, drive and emission systems in line with the latest technology standards (stage V)



05 MAINTENANCE AND SERVICE MADE EASY



KEEP IT SIMPLE. TECHNOLOGY THAT CAN BE MASTERED.

All service points are clearly arranged and easily accessible. The SENCON control system supports you with diagnostics. So your machine is back in action more quickly.



Reliable and practical technology



Stay independent and easily take care of your machine yourself



A central electrical distribution board and electronic modules simplify maintenance

06 DRIVING POSITION: BETTER SAFETY. MAXIMUM COMFORT.



Everything in view

Excellent all-round view and upward visibility. Safety thanks to roof and protective front guard and bullet proof glass. The tilt adjustment by up to 30° and the cab elevation provide an optimal overview of the demolition site.

Intuitive controls

The intuitive **SENCON** control system shows all relevant information and possibilities for action and thus actively supports you in your work with the machine.

For your health

The back-friendly comfort seat, adjustable armrests, joysticks that sit comfortably in the hand, and the optimally arranged controls and noise reduction make daily work as easy as possible. The automatic heating/air conditioning with optimum air flow guarantees a pleasant indoor climate all year round.

For your safety

Drop cone demolition debris

Elevating cab, tiltable up to

30°



07 PRACTICAL TRANSPORT

Transport your demolition machine quickly and cost-effectively from one demolition project to the next – thanks to intelligent transport concepts in one to three parts, depending on the machine type and configuration.



Small transport widths thanks to telescopic undercarriage



Compact

Low transport widths and weights guarantee cost-effective transport.



Cost-efficient

All machines can be transported on a low-loader. The larger demolition machines can be moved in three parts (870: standard, 830: optional for AB23 equipment).



Saves time

Fully hydraulic quick-change systems for the equipment and self-assembly systems for ballast unloading and loading enable rapid deployment on site.



870 Demolition: Removable counterweight reduces transport weight



Optimal hydraulically detachable counterweight with remote control for 825 + 830 Demolition



Transport of the three-part equipment in the transport frame (870 Demolition: standard, 830 Demolition: optional)

THE RIGHT SOLUTION FOR EVERY DEMOLITION TASK



	OPERATING WEIGHT	17,2 t - 26,3 t	29,5 t	38 t
	REACH	9 - 13 m	12 m	14 m
	MAXIMUM BOLT HEIGHT		13 m	15 m
	ENGINE	100 kW - 123 kW (Stage V)	129 kW (Stage V)	129 kW (Stage V)
	AREA OF USE	Easy-to-transport, flexible multifunctional machines for sorting and selective dismantling. Ideal for loading trucks and containers and for pulverizing.	Mobile and particularly flexible multifunctional machine for a wide range of tasks in dismantling and sorting. Suitable for driving on roads. High stability thanks to outriggers.	Multifunctional machine for sorting and crushing building rubble. High stability thanks to telescopic crawler undercarriage.
	TRANSPORT	Easy to transport with a low-loader. No need to dismantle the equipment. Direct unloading at the place of use without any further set-up work means that the machine is ready for use right away.	Easy to transport with a low-loader. No need to dismantle the equipment. Direct unloading at the place of use without any further set-up work means that the machine is ready for use right away.	

48 t	50,5 t	51 t	52 t	114 - 117 t
17 m	11 m	17 m	14 m	20 m
18 m	12 m	17 m	23 m	33 / 36 m
186 kW (Stage V)	209 kW (Stage V)		298 kW (Stage V)	
Precise and versatile multifunctional machine with excellent sorting performance. High stability thanks to telescopic crawler undercarriage.	Robust and versatile multifunctional machine for sorting construction waste and dismantling buildings. High stability thanks to telescopic crawler tracks. The Vario Tool hydraulic quick-change system allows equipment variants to be set down and picked up in a matter of minutes. Digging or pulling foundations, as well as demolition work at heights of up to 23 m or with interfering edges are possible without any problems.		Strong and particularly stable demolition machine with long-front equipment for particularly high altitudes. High stability thanks to telescopic crawler undercarriage.	
Easy to transport with a low-loader in one to three parts, depending on the configuration. Ready for use quickly thanks to intelligent self-assembly systems.		Easy transport in three units. Intelligent self-assembly system with ballast shelf.		

The flexible.

825E DEMOLITION MOBILE

The mobile demolition machine is particularly maneuverable and flexible. The perfect companion for demolition and sorting tasks in confined spaces, for example in the city.



STABLE

- Stable and robust thanks to outriggers
- High load capacity with 360° swivel range

BENEFITS



FLEXIBLE

- Can be driven on roads thanks to tires
- Use of a wide variety of equipment



COMPACT

- Perfect for demolition and sorting tasks in the most confined spaces



29,5 t operating weight



129 kW engine (Stage V)



13 m max. bolt height

Transport dimensions and load ratings on request.

The all-rounder.

825E
DEMOLITION CRAWLER

The space-saving all-rounder for use in selective dismantling. Ideal for sorting and dismantling tasks.



38 t operating weight



129 kW engine (Stage V)



15 m max. bolt height



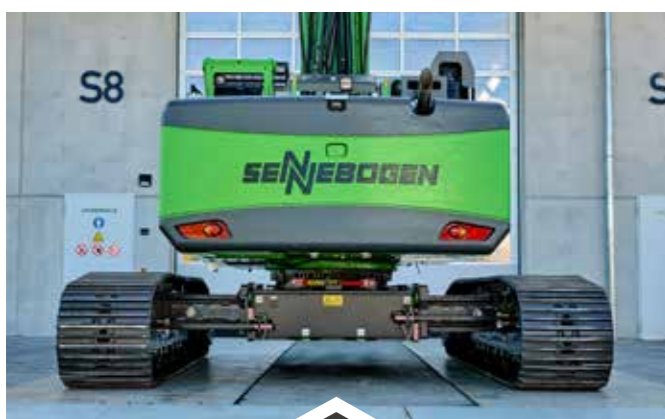
ALL-IN-ONE

- ✔ Sorting machine with high handling capacity
- ✔ Also suitable for demolition and dismantling work
- ✔ Use of a wide variety of equipment



SPACE SAVING

- ✔ Use on urban construction sites
- ✔ Particularly advantageous in confined spaces



SAFE WORKING

- ✔ Stable, telescopic crawler undercarriage
- ✔ High load capacity with 360° swivel range



READY TO USE RIGHT AWAY

- ✔ Transport in one piece with low-loader: no need to dismantle the equipment
- ✔ Ready for use immediately without setup work

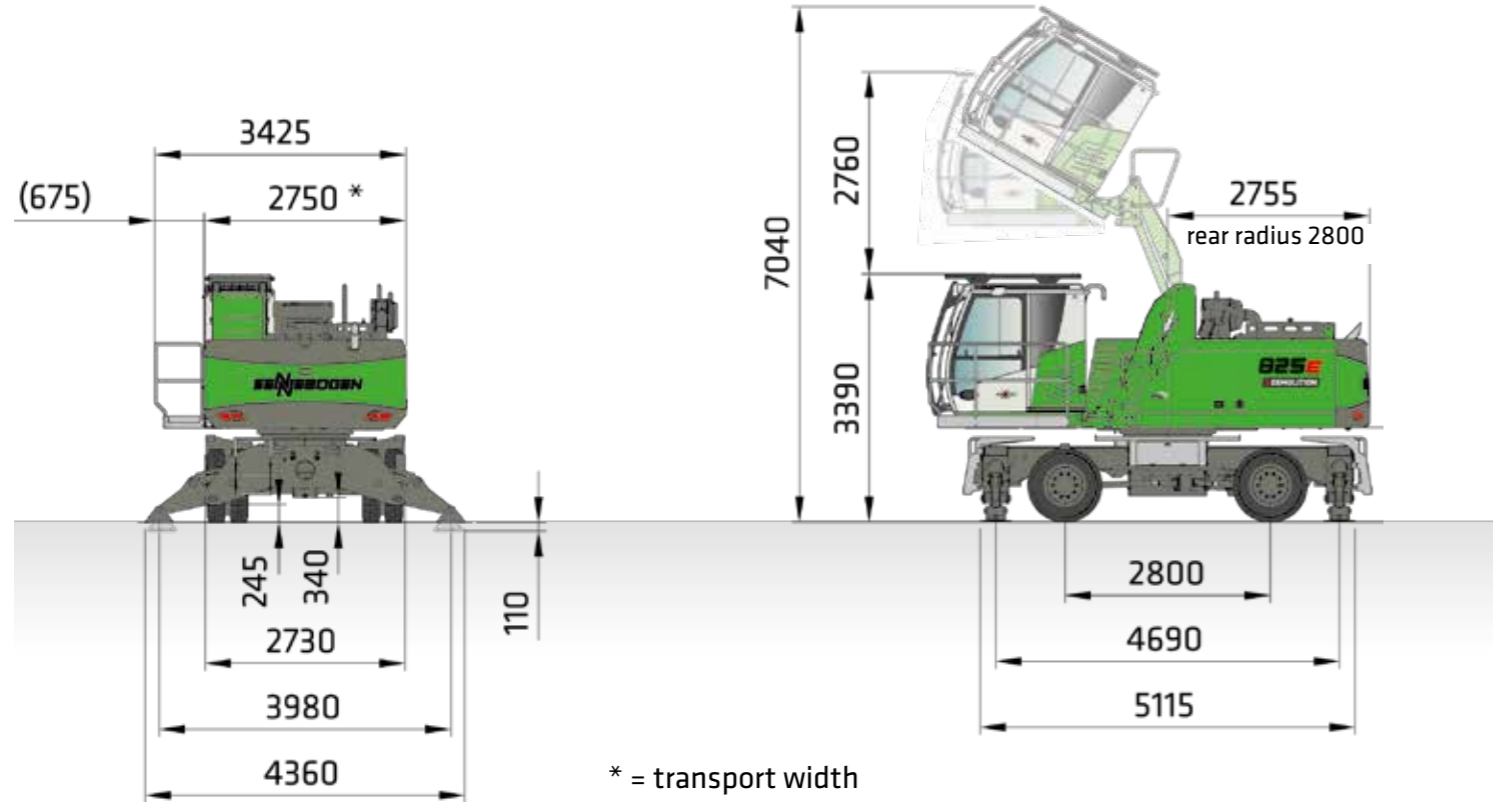
Transport dimensions and load ratings on request.

TRANSPORT DIMENSIONS

* = length with standard ballast



825 DEMOLITION WITH MP26 UNDERCARRIAGE AND K12 ULM EQUIPMENT, HYDRAULICALLY ELEVATING MAXCAB, TILTABLE UP TO 30° AND FULLY HYDRAULICALLY UNLOADABLE COUNTERWEIGHT (OPTION), OPERATING WEIGHT APPROX. 29.5 t

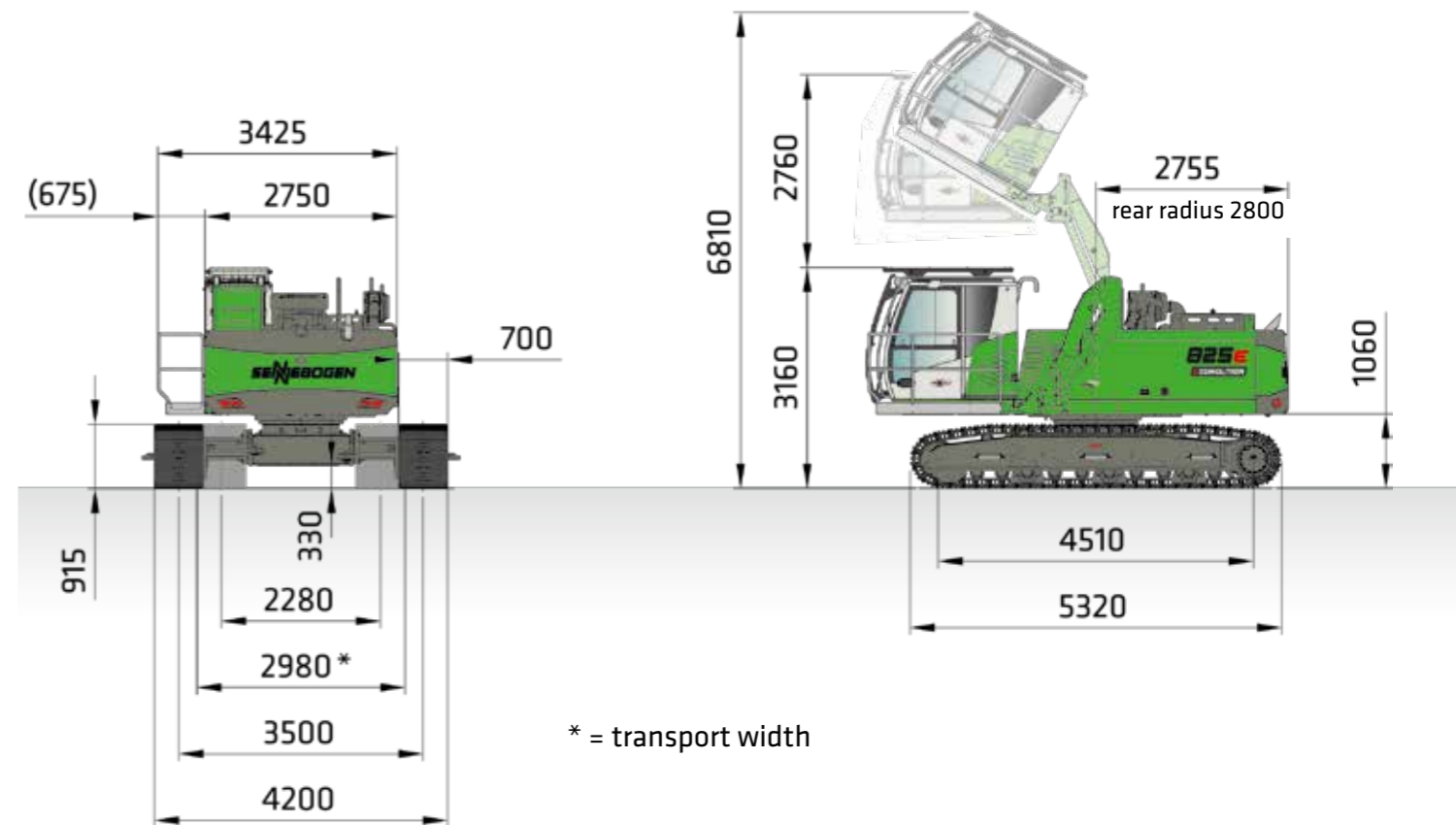


825 DEMOLITION BASIC MACHINE FOR K12 ULM EQUIPMENT INCL. COUNTERWEIGHT, HYDRAULICALLY ELEVATING MAXCAB, TILTABLE UP TO 30°

* = length with standard ballast

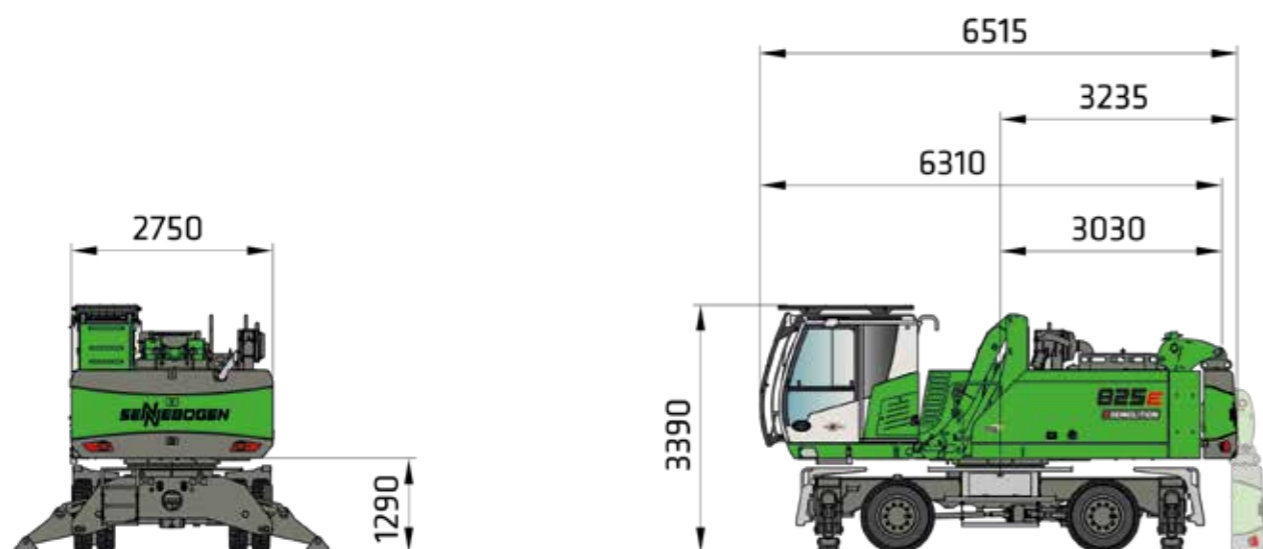


825 DEMOLITION WITH T31/350 UNDERCARRIAGE AND 2-PART K14 ULM EQUIPMENT, HYDRAULICALLY ELEVATING MAXCAB, TILTABLE UP TO 30° AND FULLY HYDRAULICALLY UNLOADABLE COUNTERWEIGHT (OPTION), OPERATING WEIGHT APPROX. 38 t

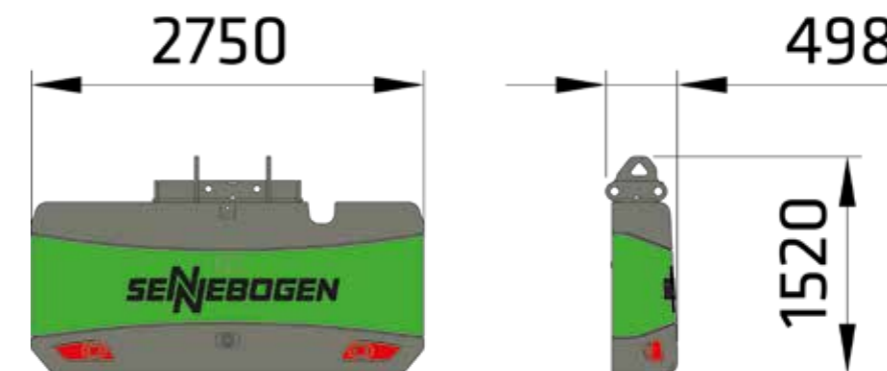


825 DEMOLITION BASIC MACHINE FOR K14 ULM EQUIPMENT INCL. COUNTERWEIGHT, HYDRAULICALLY ELEVATING MAXCAB, TILTABLE UP TO 30°, TELESCOPIC UNDERCARRIAGE

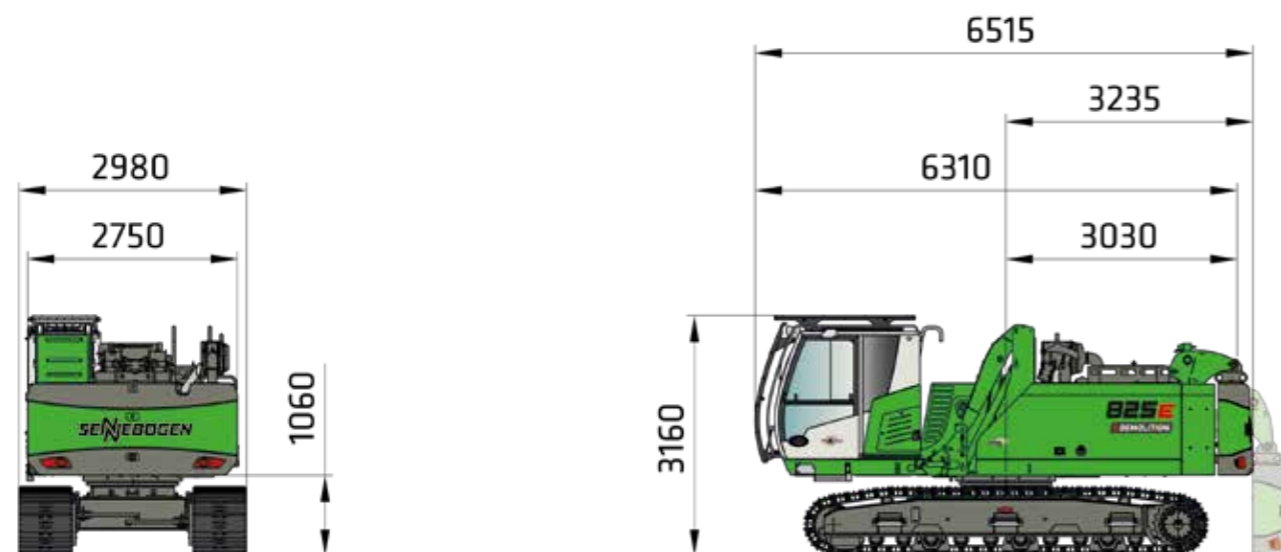
TRANSPORT DIMENSIONS



FULLY HYDRAULIC SELF-ASSEMBLY SYSTEM
FOR COUNTERWEIGHT UNLOADING/LOADING VIA REMOTE CONTROL

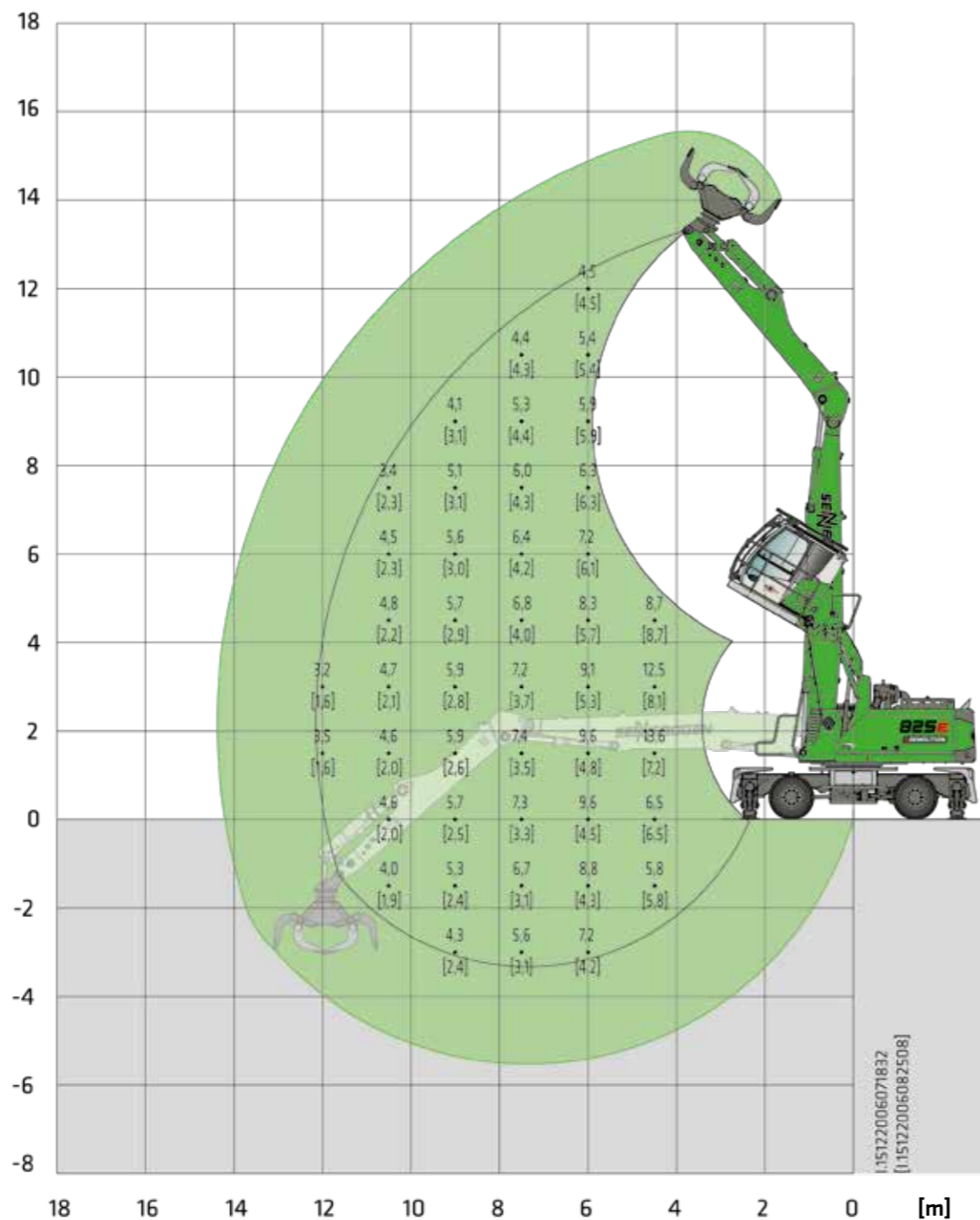


FULLY HYDRAULICALLY UNLOADABLE COUNTERWEIGHT, APPROX. 7,05 t



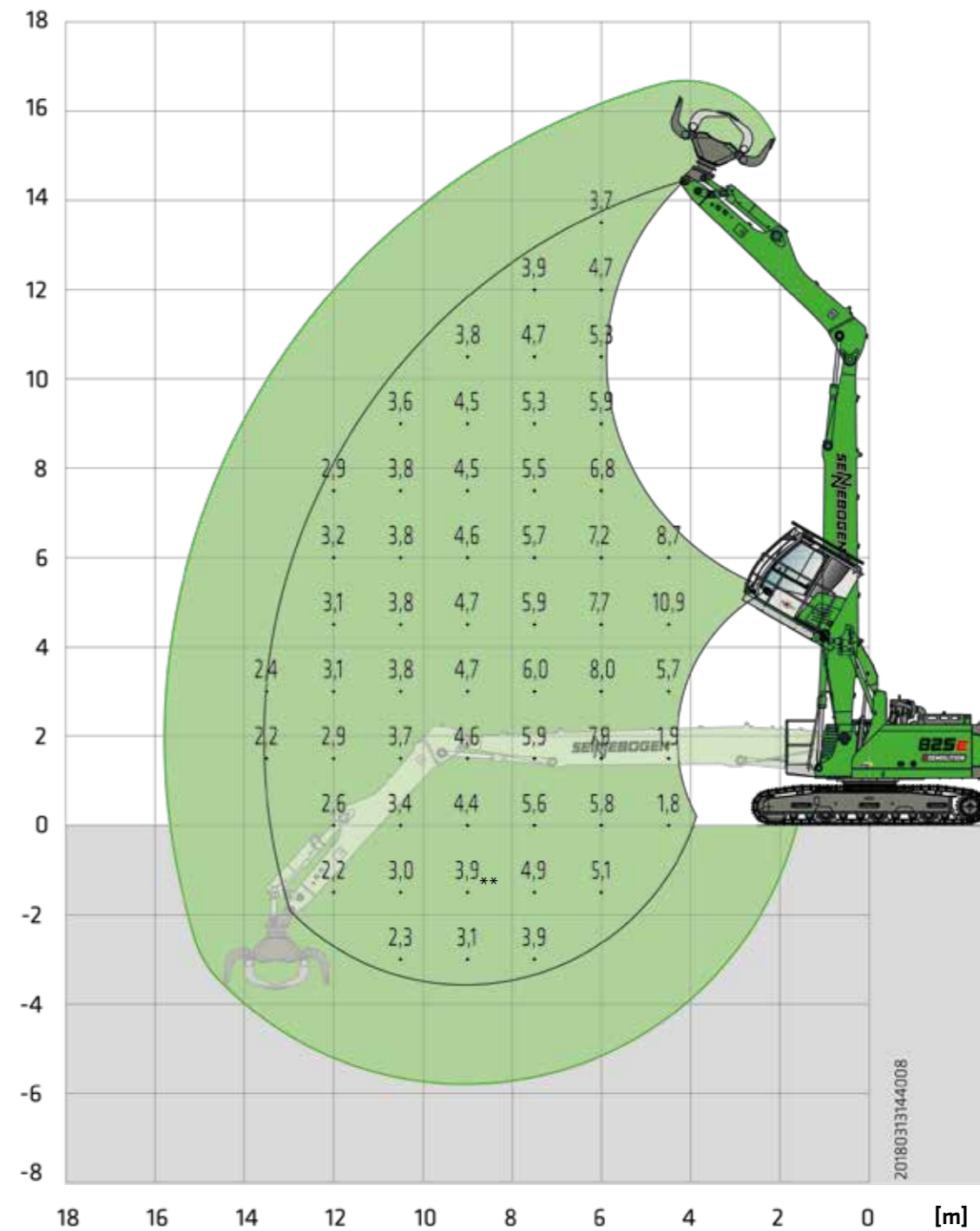
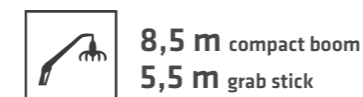
FULLY HYDRAULIC SELF-ASSEMBLY SYSTEM
FOR COUNTERWEIGHT UNLOADING/LOADING VIA REMOTE CONTROL

LOAD RATINGS



Notes:
All load ratings are given in tons (t) brought to bear at the end of the stick, without tools on firm level ground. Working tools such as grab, magnet, load hook, etc. are included in the specified load ratings. The stated values are 75% of the static tipping load and 87% of the hydraulic lifting force according to ISO10567. According to EU standard EN 474/5, hydraulic material handlers used for hoisting must be equipped with a pipe rupture safety device on lifting and stick cylinders and an overload warning device. The specified load ratings apply to maximum track width and 360° slewing.

LOAD RATINGS



Notes:
All load ratings are given in tons (t) brought to bear at the end of the stick, without tools on firm level ground. Working tools such as grab, magnet, load hook, etc. are included in the specified load ratings. The stated values are 75% of the static tipping load and 87% of the hydraulic lifting force according to ISO10567. According to EU standard EN 474/5, hydraulic material handlers used for hoisting must be equipped with a pipe rupture safety device on lifting and stick cylinders and an overload warning device. The specified load ratings apply to maximum track width and 360° slewing.

The special.

830E DEMOLITION CRAWLER

The special 830 E Demolition is exactly the right machine for demolition projects with specific requirements. It combines the advantages of its small and large demolition colleagues in one machine and is the perfect choice for predefined demolition sites with the usual challenges.



ACCURATE OPERATING

- ✓ Precise demolition and dismantling up to 17 m reach height
- ✓ Powerful and modern hydraulics for every requirement

BENEFITS



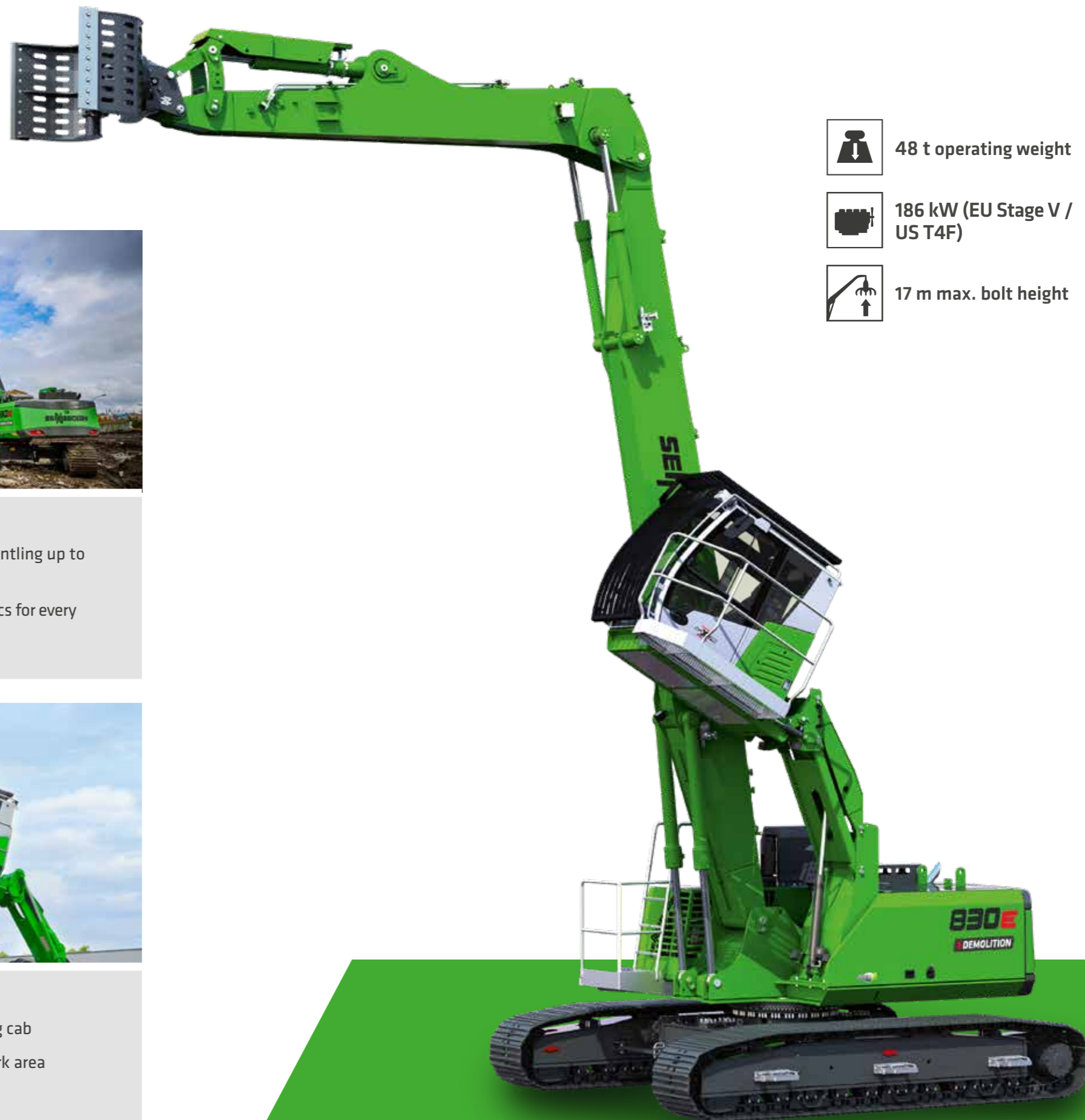
SAFE WORKING

- ✓ Maximum stability thanks to telescopic crawler undercarriage
- ✓ High load capacity with 360° slewing range



OPERATOR COMFORT

- ✓ Elevating and up to 30° tilting cab
- ✓ Optimum overview of the work area



48 t operating weight

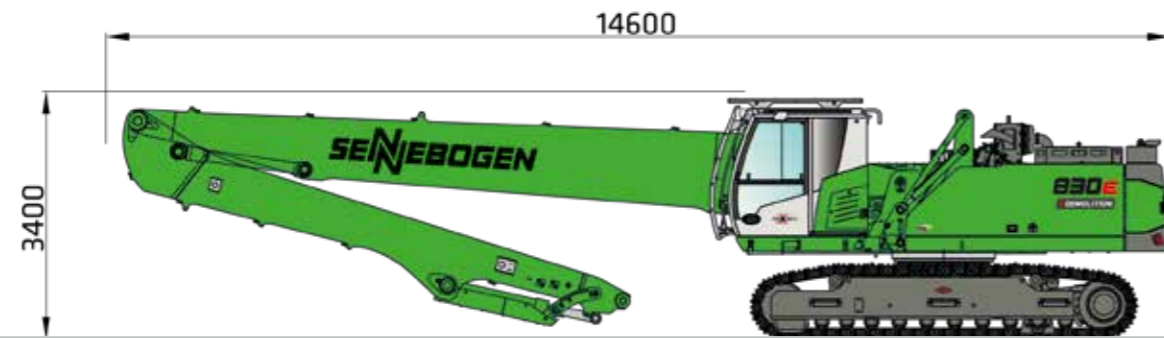


186 kW (EU Stage V / US T4F)

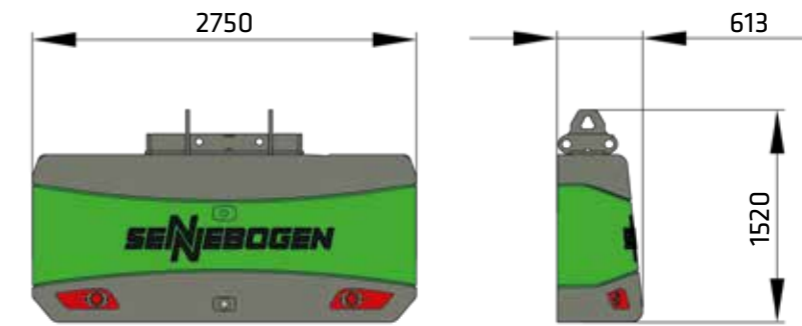


17 m max. bolt height

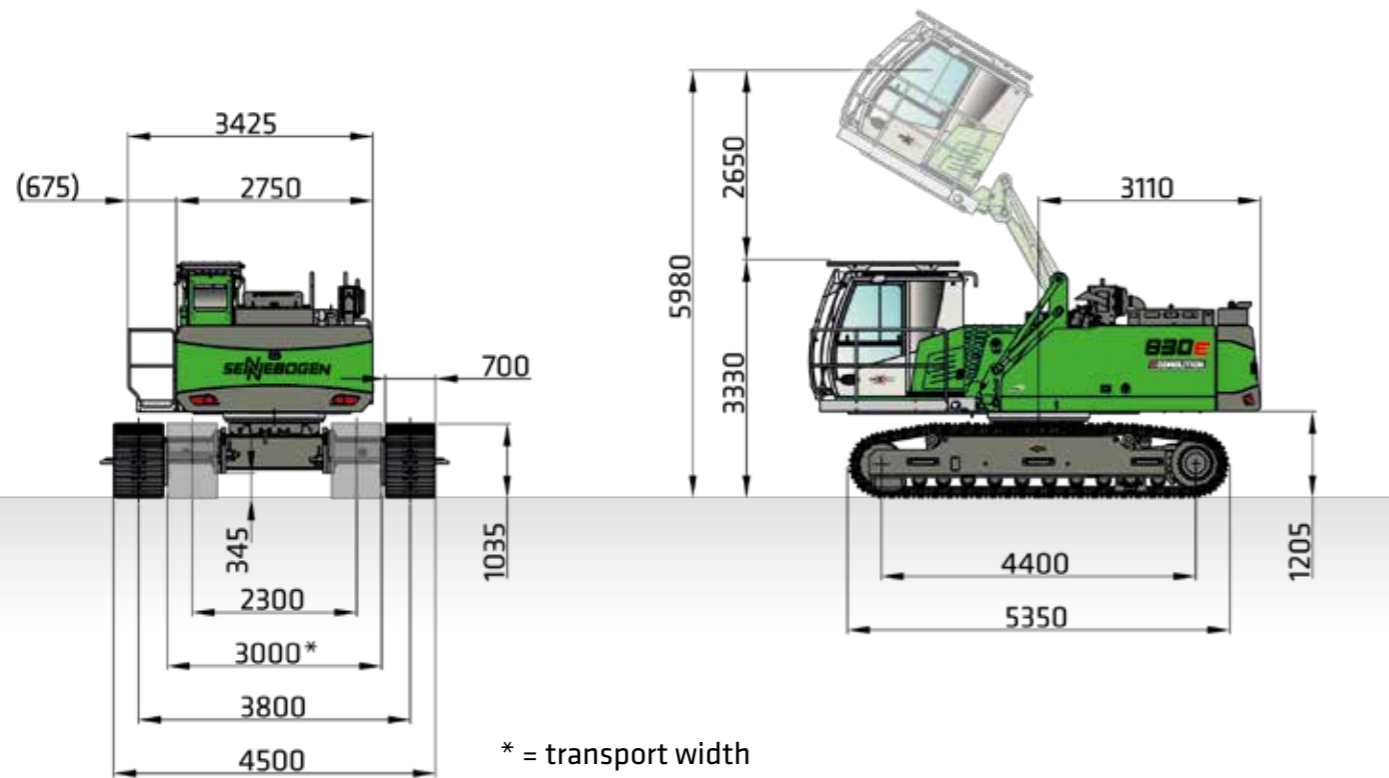
TRANSPORT DIMENSIONS



830 DEMOLITION WITH UNDERCARRIAGE T41/380 AND EQUIPMENT K17 ULM, HYDRAULICALLY ELEVATING CAB MAXCAB, 30° TILTABLE, OPERATING WEIGHT APPROX. 48 t

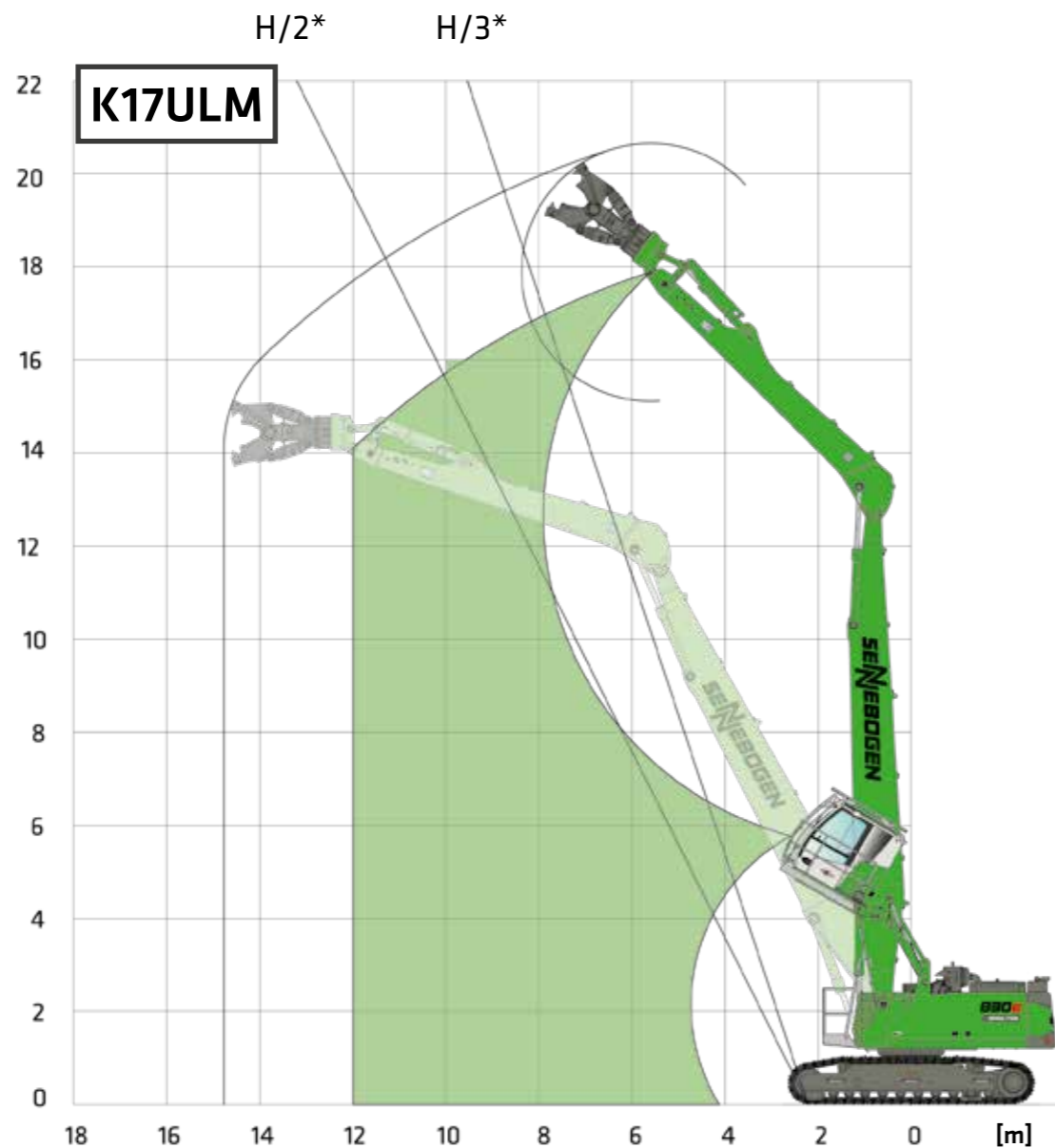


FULLY HYDRAULICALLY DETACHABLE COUNTERWEIGHT, APPROX. 10 t



830 DEMOLITION BASIC MACHINE FOR K17 ULM EQUIPMENT INCL. COUNTERWEIGHT, HYDRAULICALLY ELEVATING MAXCAB, 30° TILTABLE, TELESCOPING UNDERCARRIAGE

LOAD RATINGS

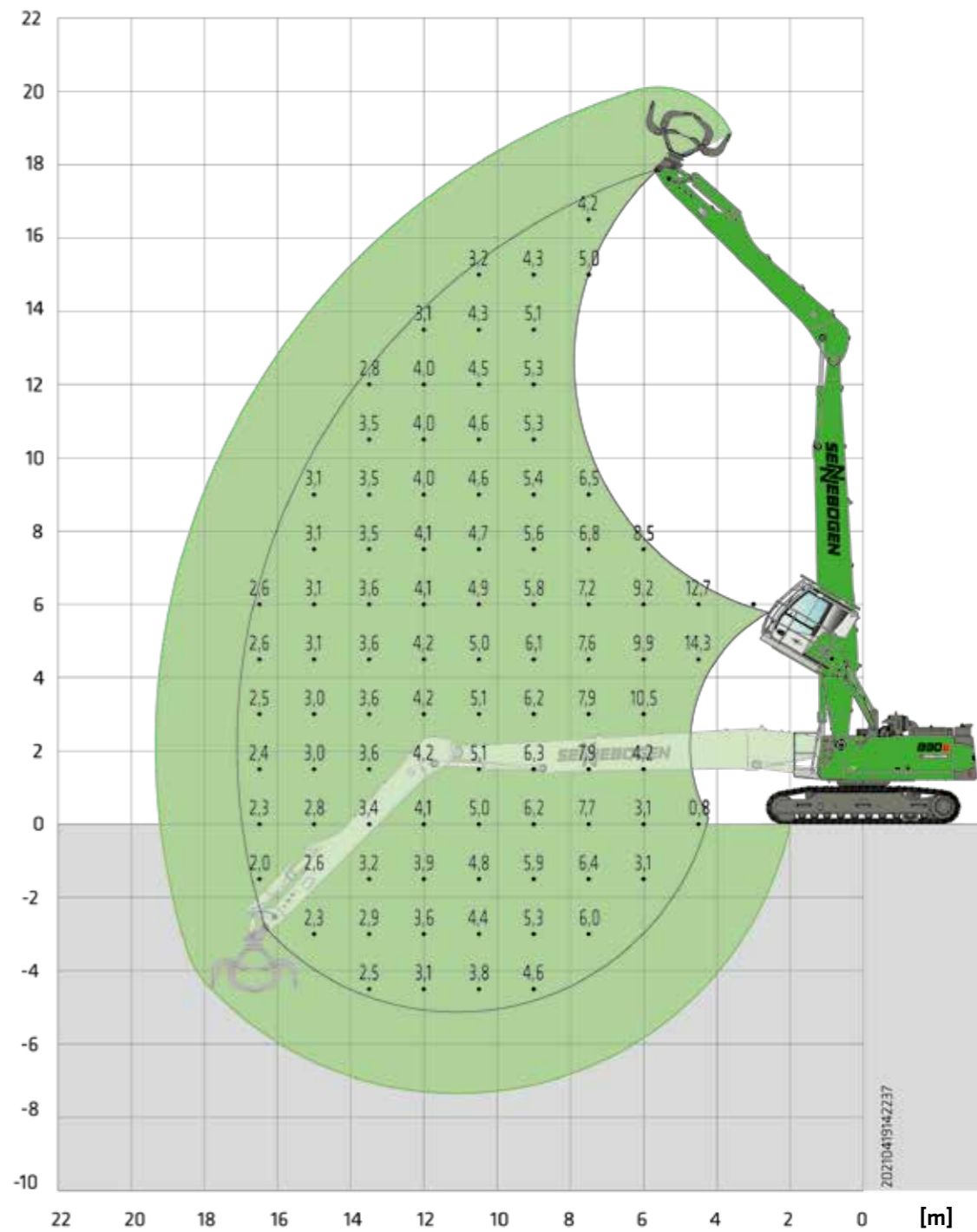


* Please note the safety distance according to BGV C22 between the machine and the demolition object (H=demolition height).

** Total tool weight incl. quick-changer, adapter plate and attachment: max. 3.5t

Notes:
All load ratings are given in tons (t) brought to bear at the end of the stem, without tools on firm level ground in the work area of 34° on both sides to the under-carriage axle. Working tools such as gripper, magnet, load hook etc. are included in the specified load ratings. The stated values are 75% of the static tipping load and 87% of the hydraulic lifting force according to ISO10567. According to the EU standard EN 474/5, material handling equipment used for hoisting must be equipped with a pipe rupture safety device on the lifting cylinder and an overload warning device.

LOAD RATINGS



Notes:
All load ratings are given in tons (t) brought to bear at the end of the stem, without tools on firm level ground in the work area of 34° on both sides to the under-carriage axle. Working tools such as gripper, magnet, load hook etc. are included in the specified load ratings. The stated values are 75% of the static tipping load and 87% of the hydraulic lifting force according to ISO10567. According to the EU standard EN 474/5, material handling equipment used for hoisting must be equipped with a pipe rupture safety device on the lifting cylinder and an overload warning device.

The versatile.

830E

DEMOLITION CRAWLER

VARIO TOOL

The medium-sized SENNEBOGEN demolition machine combines multifunctionality with high performance and is just as suitable for confined, urban construction sites as it is for demolition projects at greater heights.



MAXIMUM POWER FOR DISMANTLING AND SORTING

- Combines the advantages of a robust demolition machine with high handling speed and compact dimensions
- Powerful and precise hydraulic system

BENEFITS



VARIO TOOL: ALL IN ONE

- Maximum flexibility by changing equipment in minutes
- Digging, sorting and demolition in one machine



EASY TO TRANSPORT

- Transport as a whole or optionally in up to three machine parts
- The transport weight can be reduced by approx. 10 tons via remote control thanks to the optional counterweight



50,5 - 52 t operating weight



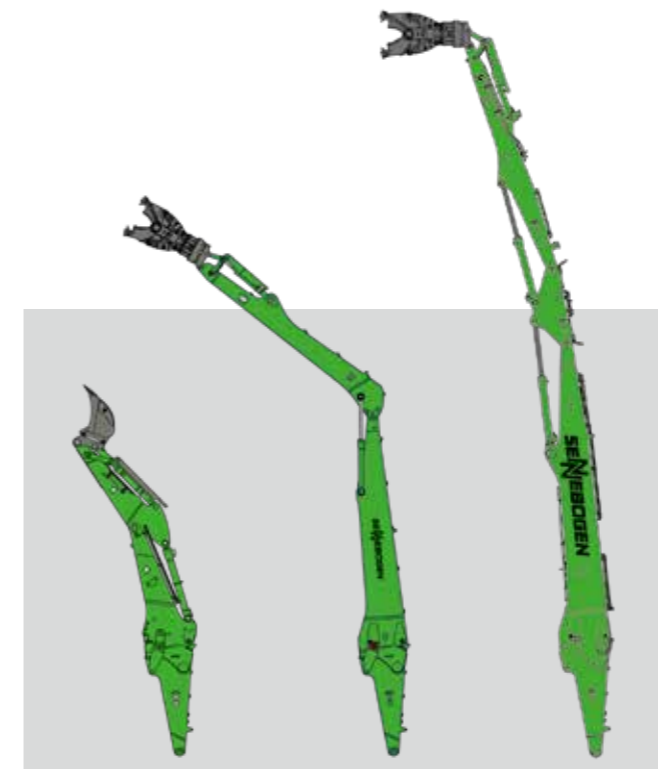
209 kW (EU Stage V / US T4F)



12 - 23 m max. bolt height

**OPTION:
EVEN MORE
FLEXIBILITY AND
REACH HEIGHT**

**BOOM
OPTIONS: EA12,
AB17, AB23**



01 CHOOSE

- Available with three types of equipment in different lengths and designs and therefore suitable for a wide range of applications.

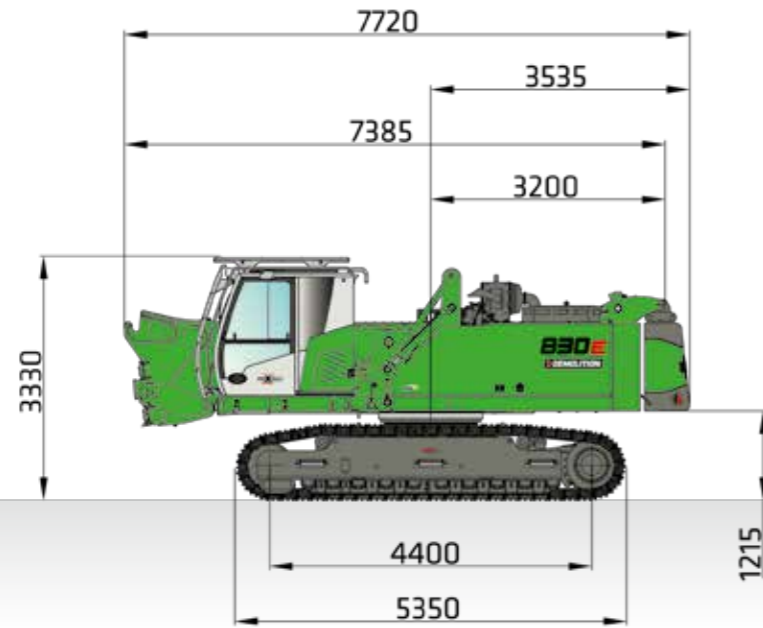
02 LOAD

- The fully hydraulic Vario Tool quick-change system for the equipment can be conveniently operated from the cab.
- The equipment is locked at the touch of a button.

03 EFFICIENT AND SAFE DEMOLITION

- With the AB23 three-part equipment, you gain even more reach for precise dismantling of buildings at great heights.
- The special three-part construction allows for an increased safety distance from the building.
- Overcome projecting edges with the intermediate joint.

TRANSPORT DIMENSIONS



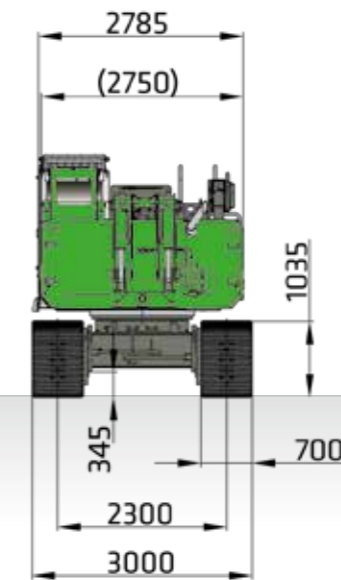
830 DEMOLITION BASIC MACHINE, OPTIONAL FULLY HYDRAULIC QUICK-CHANGE SYSTEM FOR EQUIPMENT FROM 23 INCL. COUNTERWEIGHT, TRANSPORT WEIGHT APPROX. 44 t INCL. COUNTERWEIGHT APPROX. 10 t



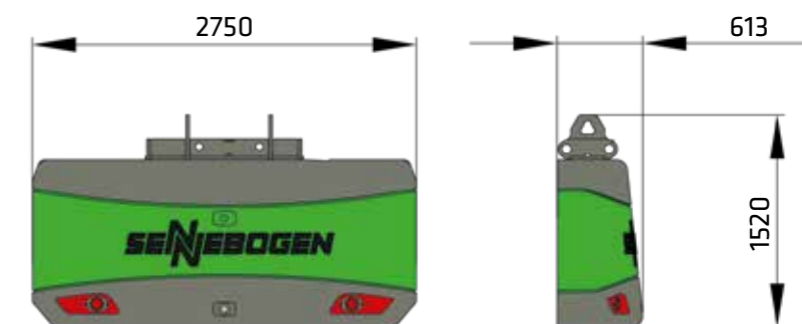
LOADING OPTION PER 830 DEMOLITION VARIO TOOL BASIC MACHINE WITH T41/380 UNDERCARRIAGE, HYDRAULICALLY ELEVATING MAXCAB, 30° TILTABLE, SEPARATELY HYDRAULICALLY LOWERABLE COUNTERWEIGHT



FULLY HYDRAULIC SELF-ASSEMBLY SYSTEM FOR BALLAST DEPOSIT/PICK-UP VIA REMOTE CONTROL

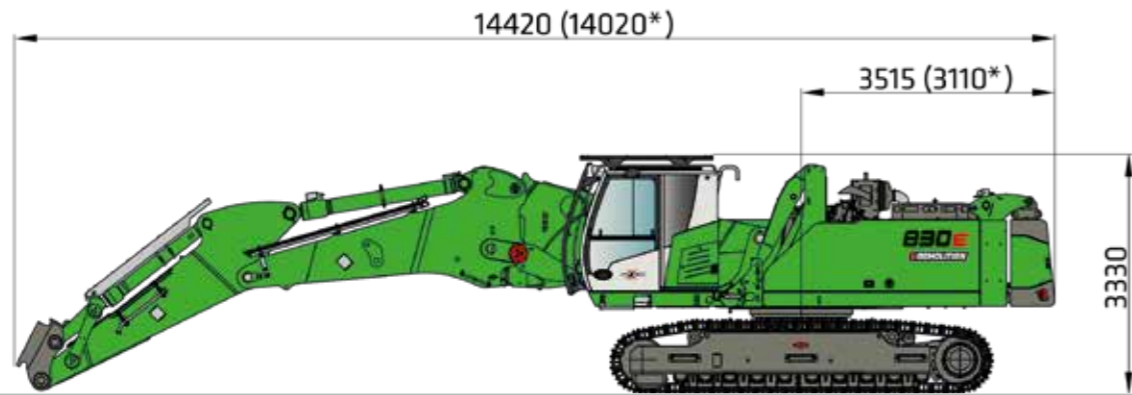


830 DEMOLITION BASIC MACHINE WITHOUT COUNTERWEIGHT, WITH FULLY HYDRAULIC SELF-MOUNTING SYSTEM



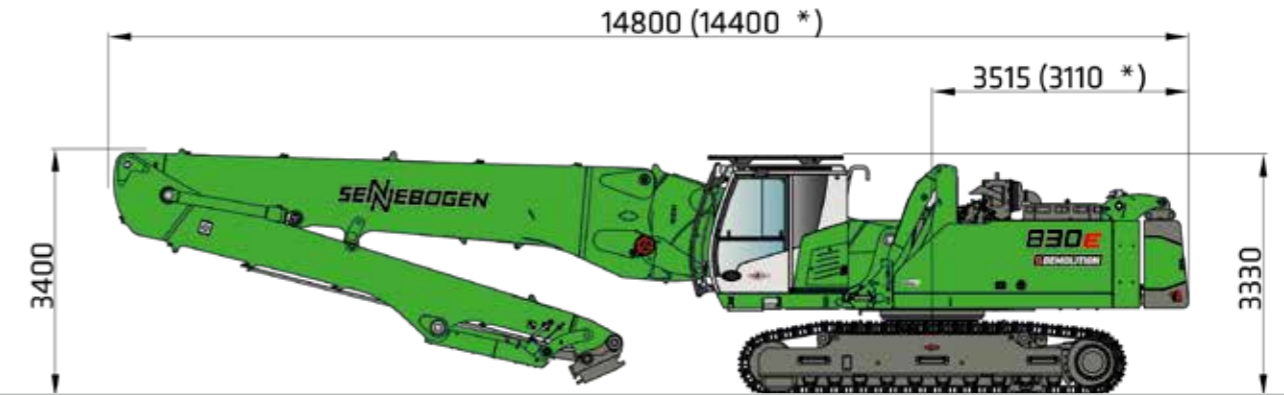
FULLY HYDRAULICALLY DETACHABLE COUNTERWEIGHT, APPROX. 10 t

* = length with standard ballast

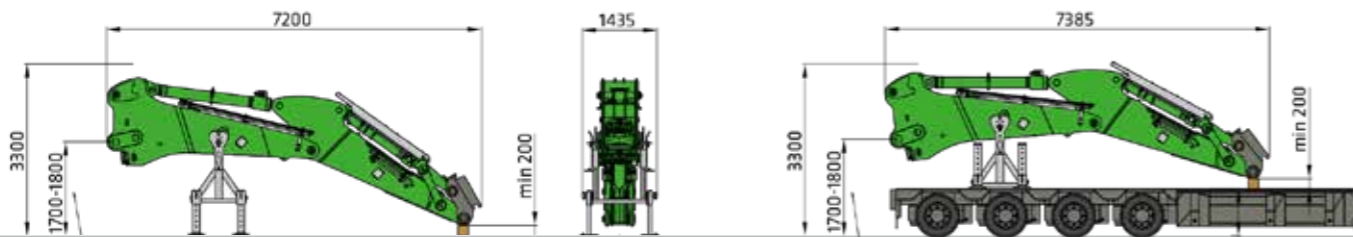


830 DEMOLITION VARIO TOOL, EA12 WITH UNDERCARRIAGE T41/380, DIGGING EQUIPMENT, HYDRAULIC BALLAST SUPPORT (OPTION), HYDRAULIC HIGH-DRIVE CAB MAXCAB, 30° TILTABLE, APPLICATION WEIGHT 50,5 t

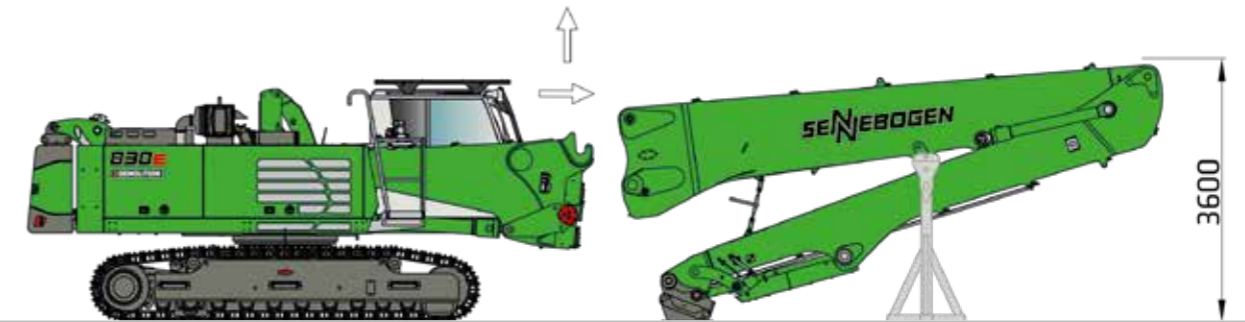
* = length with standard ballast



830 DEMOLITION VARIO TOOL, AB17 WITH UNDERCARRIAGE T41/380, DEMOLITION EQUIPMENT AB17, HYDRAULICALLY HIGHLY DRIVABLE CAB MAXCAB, 30° TILTABLE, HYDRAULIC BALLAST STORAGE (OPTION), APPLICATION WEIGHT: 51 t



EQUIPMENT EA12 + BEARING PEDESTAL (LEFT: MAX. HEIGHT, RIGHT: MIN. HEIGHT) + QUICK COUPLER, OPERATING WEIGHT APPROX. 7 t

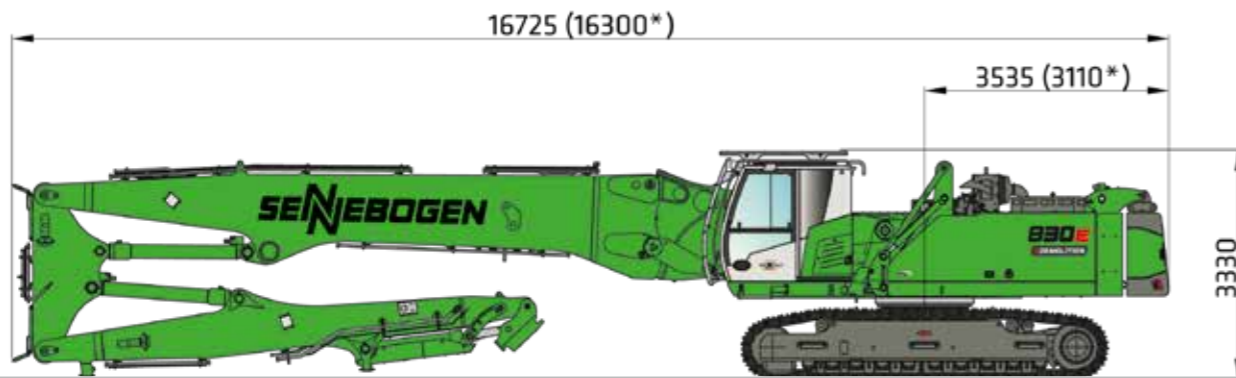


TRANSPORT AND SET-UP OPTION 830 DEMOLITION VARIO TOOL, FROM17 WITH UNDERCARRIAGE T41/380, DEMOLITION EQUIPMENT AB17, HYDRAULICALLY ELEVATING CAB MAXCAB, 30° TILTABLE, HYDRAULIC BALLAST SUPPORT (OPTION)

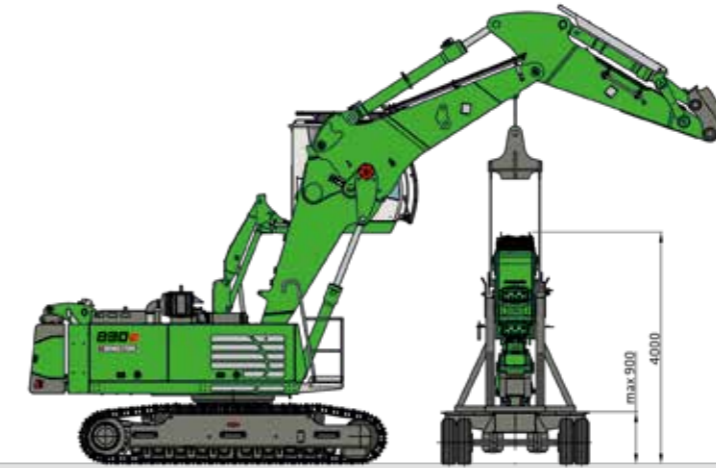


TRANSPORT OPTION BASE MACHINE + EA12, INCL. BEARING BASE, WITHOUT CONTAINER WEIGHT, APPLICATION WEIGHT: 51 t

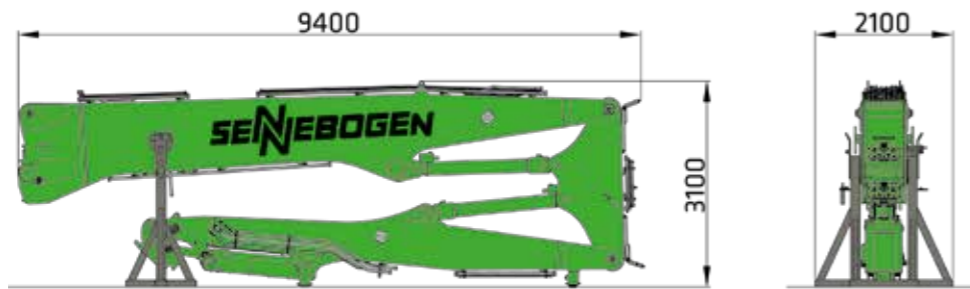
* = length with standard ballast



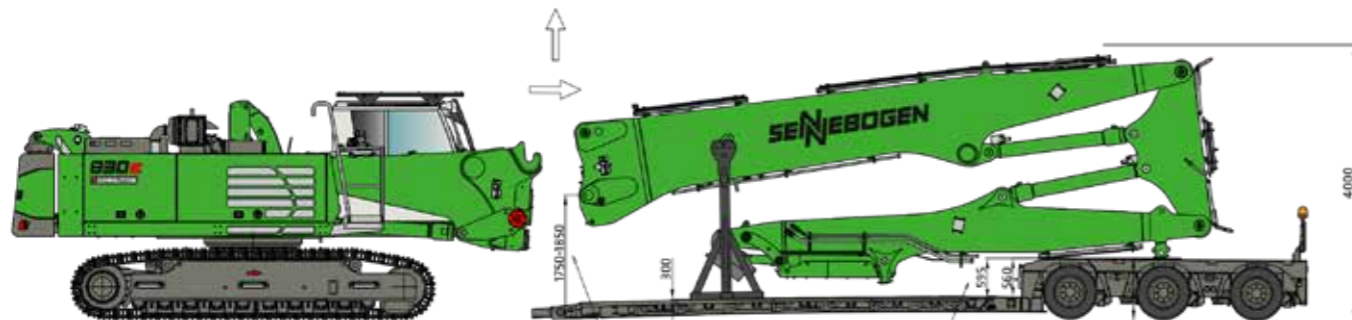
830 DEMOLITION WITH T41/380 UNDERCARRIAGE AND 3-PIECE DEMOLITION EQUIPMENT AB23 (OPTIONAL), HYDRAULICALLY ELEVATING MAXCAB, 30° TILTABLE AND FULLY HYDRAULICALLY LOWERABLE COUNTERWEIGHT (OPTIONAL), OPERATING WEIGHT APPROX. 52 t



LOADING OPTION OF THE 3-PART DEMOLITION EQUIPMENT AB23 IN THE TRANSPORT FRAME WITH THE AID OF THE 830 E DEMOLITION VARIO TOOL DIGGING EQUIPMENT EA12



3-PART DEMOLITION EQUIPMENT AB23 WITH TRANSPORT FRAME APPROX. 8.7 t



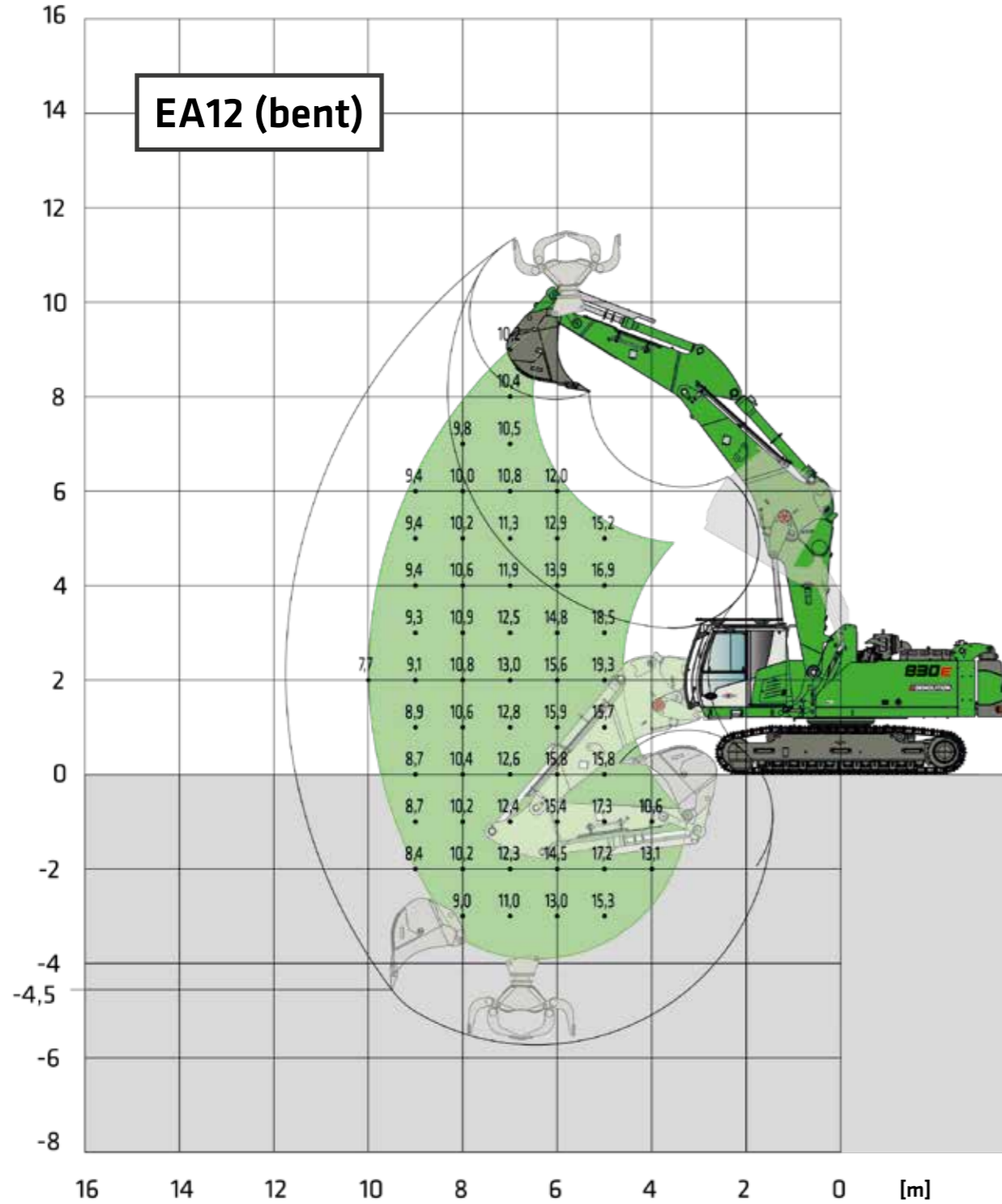
TRANSPORT AND SET-UP OPTION 830 DEMOLITION VARIO TOOL, AB23 WITH UNDERCARRIAGE T41/380, DEMOLITION EQUIPMENT AB23, HYDRAULICALLY ELEVATING CAB MAXCAB, 30° TILTABLE, HYDRAULIC BALLAST DEPOSIT (OPTION)

LOAD RATINGS

T41/380

6,5 m compact boom
3,2 m grab stick

Maxcab G280,
hydraulically elevating, tiltable by 30°



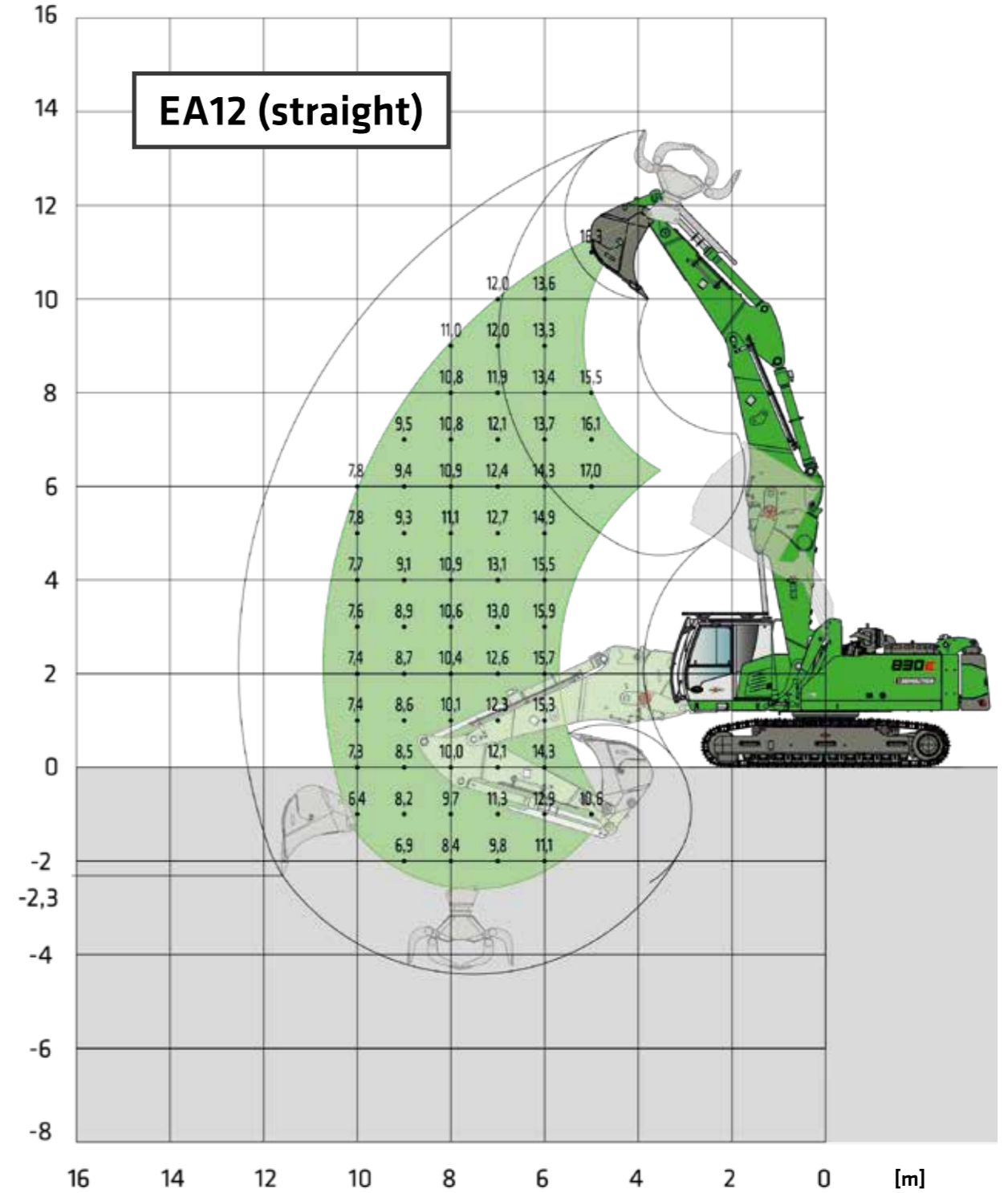
Notes:
All load ratings are given in tons (t) brought to bear at the end of the stem, without tools on firm level ground in the work area of 34° on both sides to the undercarriage axle. Working tools such as gripper, magnet, load hook etc. are included in the specified load ratings. The stated values are 75% of the static tipping load and 87% of the hydraulic lifting force according to ISO10567. According to the EU standard EN 474/5, material handling equipment used for hoisting must be equipped with a pipe rupture safety device on the lifting cylinder and an overload warning device.

LOAD RATINGS

T41/380

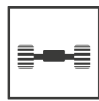
6,5 m compact boom
3,2 m grab stick

Maxcab G280,
hydraulically elevating, tiltable by 30°



Notes:
All load ratings are given in tons (t) brought to bear at the end of the stem, without tools on firm level ground in the work area of 34° on both sides to the undercarriage axle. Working tools such as gripper, magnet, load hook etc. are included in the specified load ratings. The stated values are 75% of the static tipping load and 87% of the hydraulic lifting force according to ISO10567. According to the EU standard EN 474/5, material handling equipment used for hoisting must be equipped with a pipe rupture safety device on the lifting cylinder and an overload warning device.

LOAD RATINGS



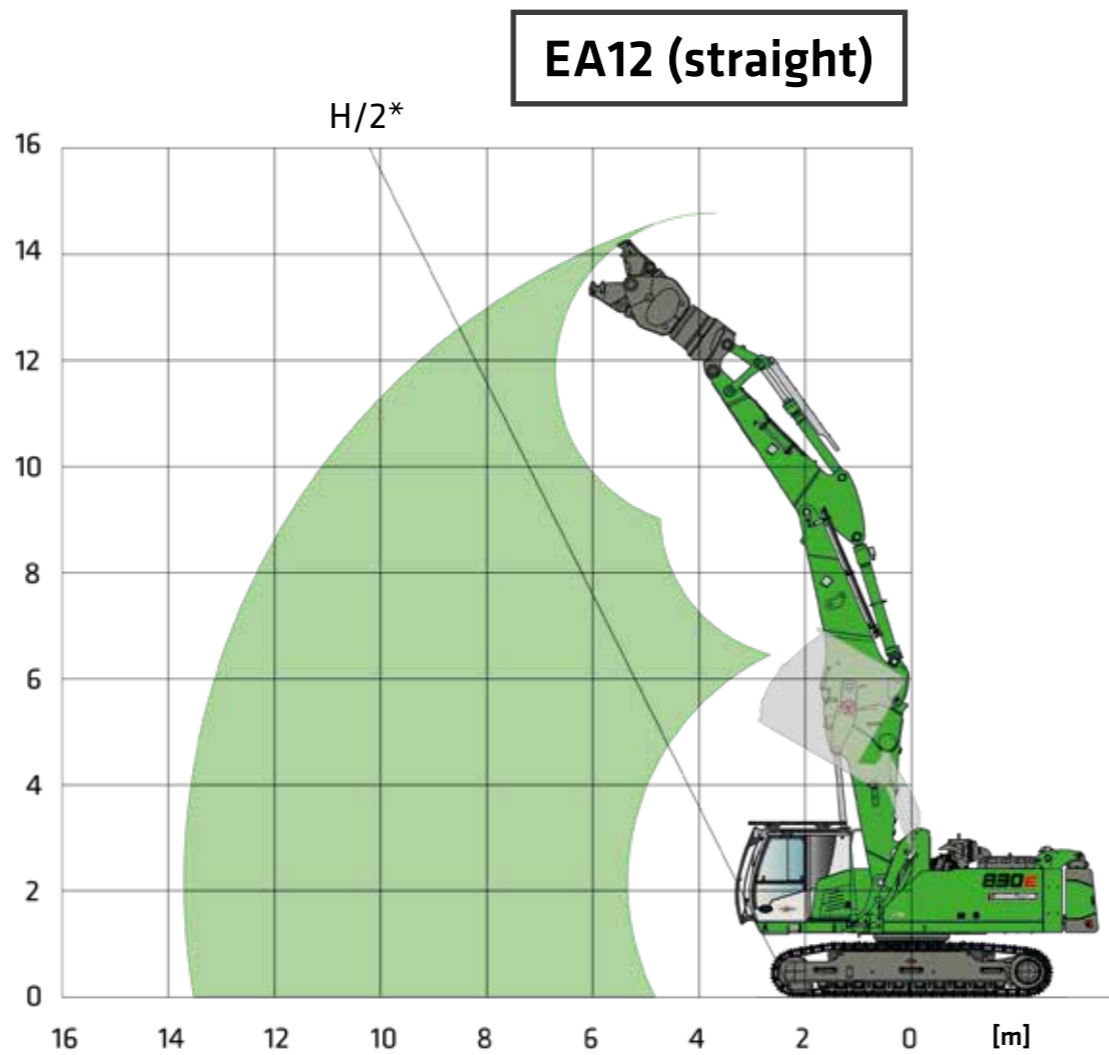
T41/380



6,5 m compact boom
3,2 m grab stick



Maxcab G280,
hydraulically elevating, tiltable by 30°



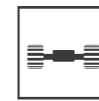
* Please note the safety distance according to BGV C22 between the machine and the demolition object (H=demolition height).

** Total tool weight incl. quick-changer, adapter plate and attachment: max. 5 t

Notes:

All load ratings are given in tons (t) brought to bear at the end of the stem, without tools on firm level ground in the work area of 34° on both sides to the undercarriage axle. Working tools such as gripper, magnet, load hook etc. are included in the specified load ratings. The stated values are 75% of the static tipping load and 87% of the hydraulic lifting force according to ISO10567. According to the EU standard EN 474/5, material handling equipment used for hoisting must be equipped with a pipe rupture safety device on the lifting cylinder and an overload warning device.

LOAD RATINGS



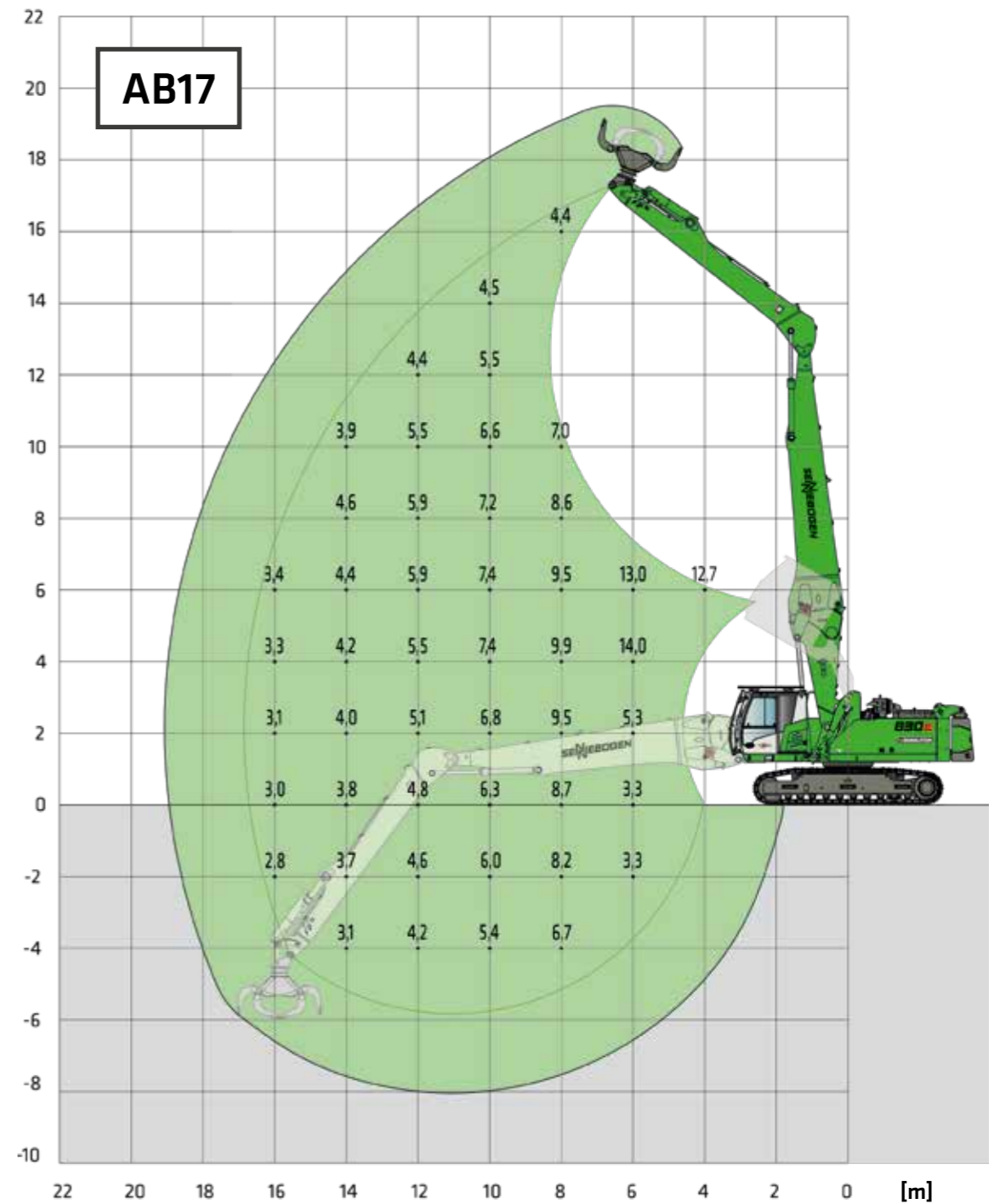
T41/380



10,5 m compact boom
7,1 m grab stick



Maxcab G280,
hydraulically elevating, tiltable by 30°

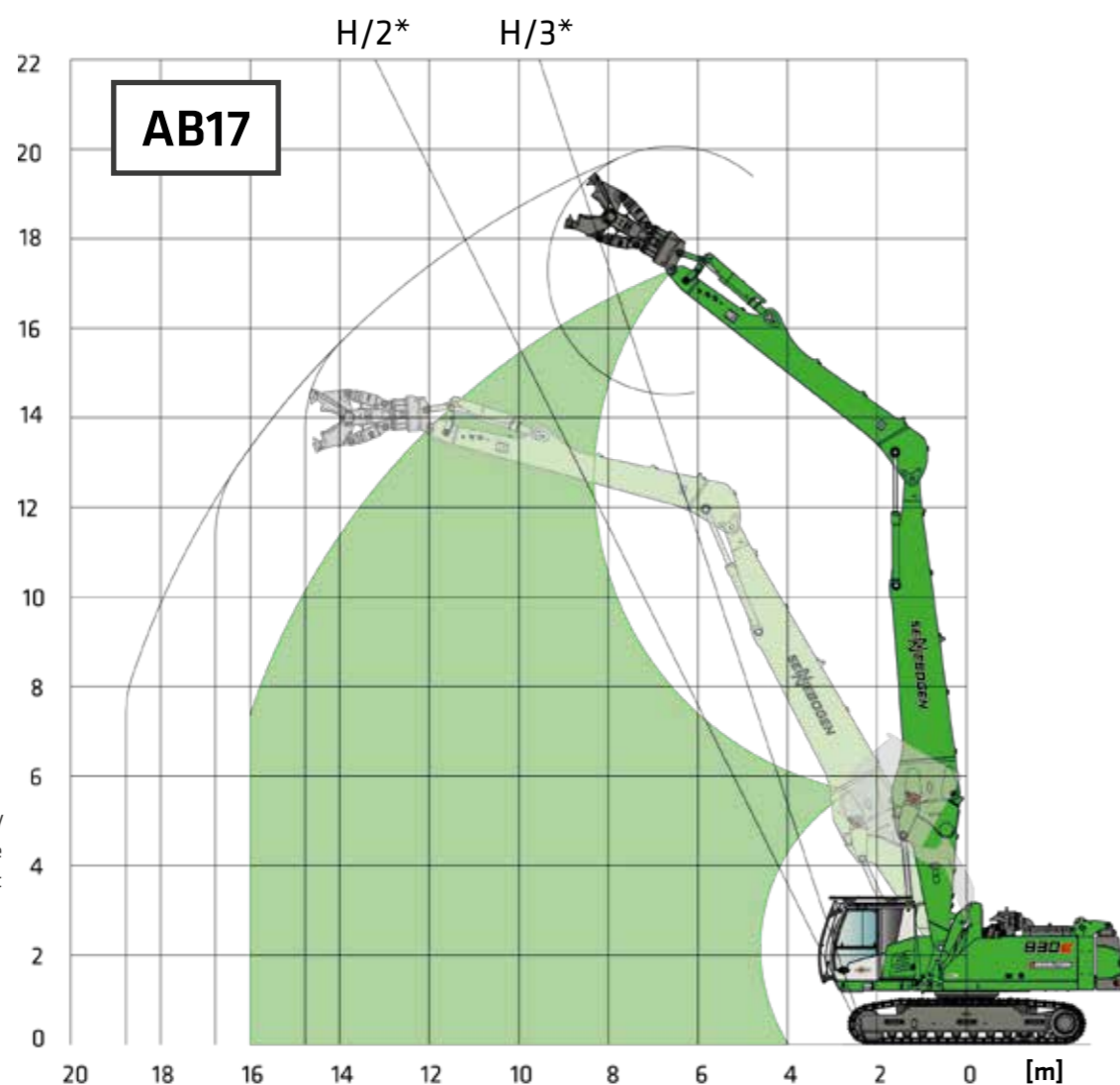


Notes:

All load ratings are given in tons (t) brought to bear at the end of the stem, without tools on firm level ground in the work area of 34° on both sides to the undercarriage axle. Working tools such as gripper, magnet, load hook etc. are included in the specified load ratings. The stated values are 75% of the static tipping load and 87% of the hydraulic lifting force according to ISO10567. According to the EU standard EN 474/5, material handling equipment used for hoisting must be equipped with a pipe rupture safety device on the lifting cylinder and an overload warning device.

LOAD RATINGS

 T41/380
  10,5 m compact boom
 7,1 m grab stick
  Maxcab G280,
 hydraulically elevating, tiltable by 30°



* Please note the safety distance according to BGV C22 between the machine and the demolition object (H=demolition height).

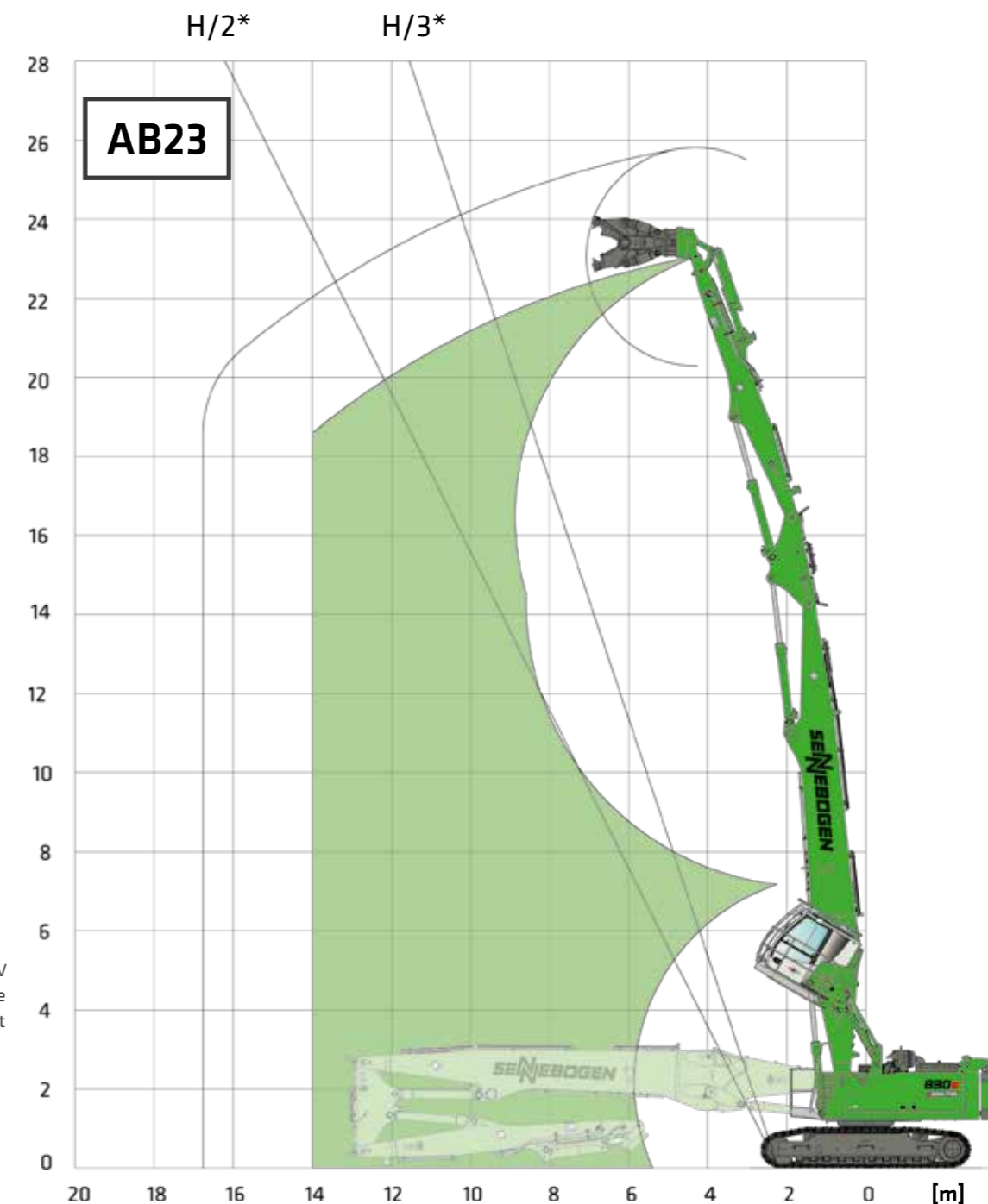
** Total tool weight incl. quick-changer, adapter plate and attachment: max. 3,5 t

Notes:

All load ratings are given in tons (t) brought to bear at the end of the stem, without tools on firm level ground in the work area of 34° on both sides to the undercarriage axle. Working tools such as gripper, magnet, load hook etc. are included in the specified load ratings. The stated values are 75% of the static tipping load and 87% of the hydraulic lifting force according to ISO10567. According to the EU standard EN 474/5, material handling equipment used for hoisting must be equipped with a pipe rupture safety device on the lifting cylinder and an overload warning device.

LOAD RATINGS

 T41/380
  12,1 m compact boom
 7 m grab stick
 2,25 m intermediate piece
  Maxcab G280,
 hydraulically elevating, tiltable by 30°



* Please note the safety distance according to BGV C22 between the machine and the demolition object (H=demolition height).

** Total tool weight incl. quick-changer, adapter plate and attachment: max. 3,0 t

Notes:

All load ratings are given in tons (t) brought to bear at the end of the stem, without tools on firm level ground in the work area of 34° on both sides to the undercarriage axle. Working tools such as gripper, magnet, load hook etc. are included in the specified load ratings. The stated values are 75% of the static tipping load and 87% of the hydraulic lifting force according to ISO10567. According to the EU standard EN 474/5, material handling equipment used for hoisting must be equipped with a pipe rupture safety device on the lifting cylinder and an overload warning device.

The robust.

870E DEMOLITION CRAWLER

Maximum power and reach for demolition: The powerful demolition excavator with three-part long-front equipment is suitable for demanding demolition work at high altitudes.



PRECISION AT HIGH ALTITUDES

- Safe demolition of buildings with maximum bolt height of up to 36 meters
- Precise control for accurate grabbing and removal, even at high altitudes

BENEFITS



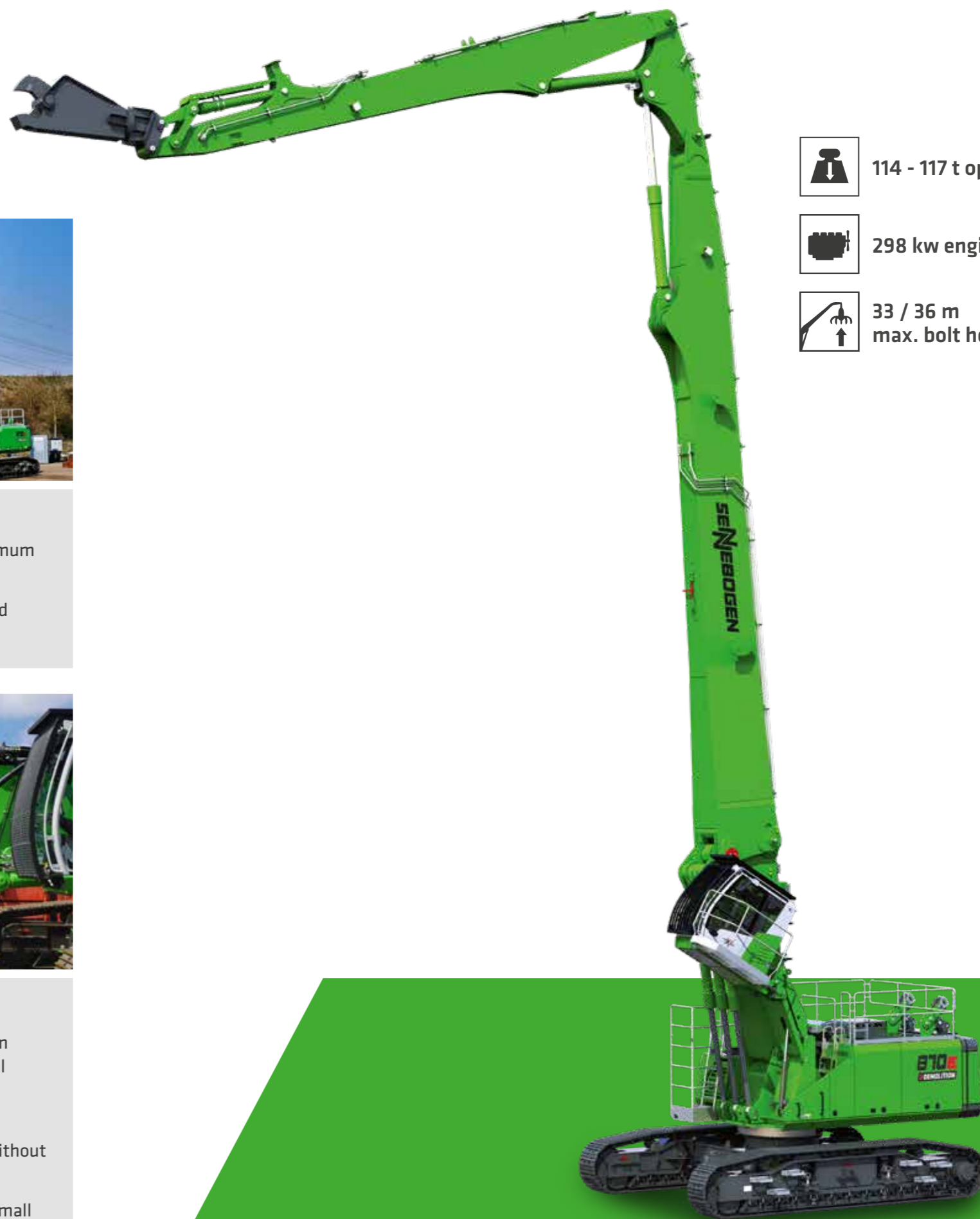
POWERFUL

- High load capacity with swivel range of +/- 34°
- Powerful hydraulics incl. third hydraulic cylinder for attachments of up to 4 tons
- Maximum stability thanks to telescopic crawler undercarriage



FLEXIBLE

- All-rounder for various applications from dismantling to pre-sorting with optional quick-changer
- Intelligent self-assembly system: Attachment of rear ballast and boom without additional auxiliary cranes
- Transport in three machine parts with small transport width



114 - 117 t operating weight

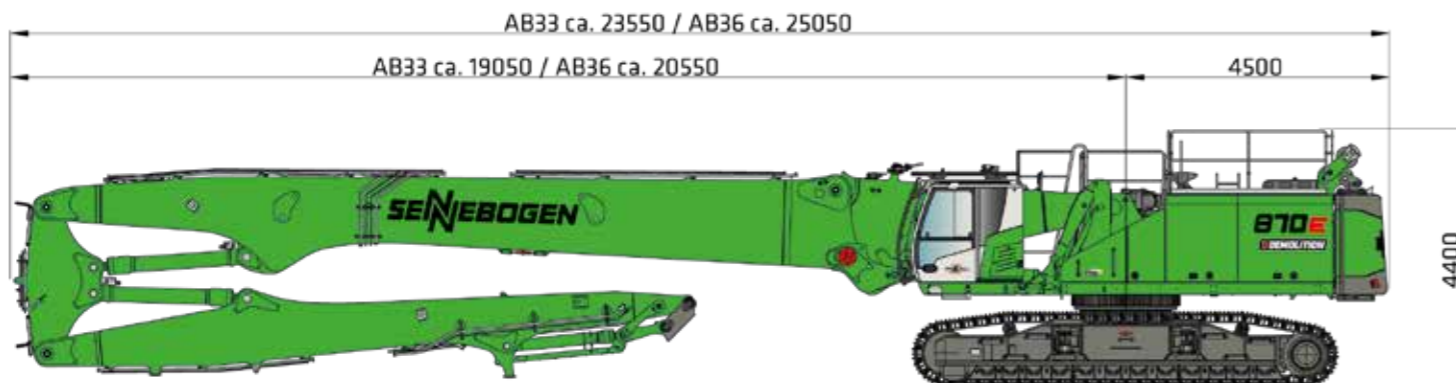


298 kw engine (Stage V)

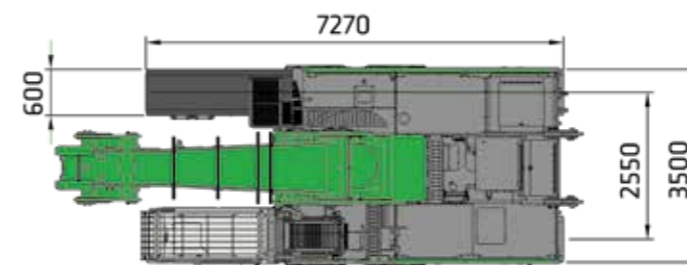


33 / 36 m max. bolt height

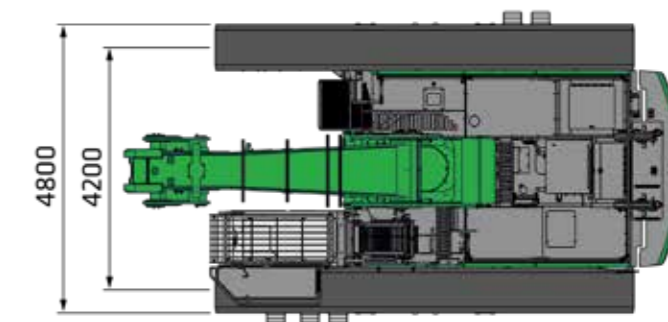
TRANSPORT DIMENSIONS



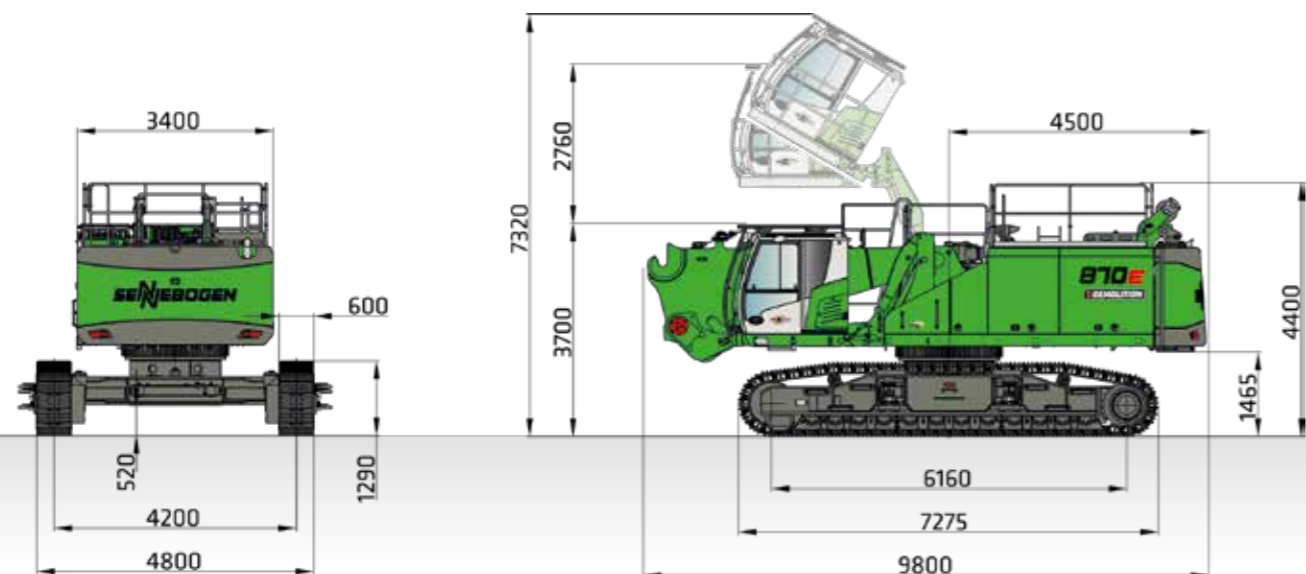
870 DEMOLITION WITH T102/420 UNDERCARRIAGE AND 3-PART DEMOLITION BOOM, HYDRAULICALLY ELEVATING MAXCAB, TILTABLE UP TO 30°, ULM OPERATING WEIGHT APPROX. 114 t - 117 t (WITHOUT TOOLS)



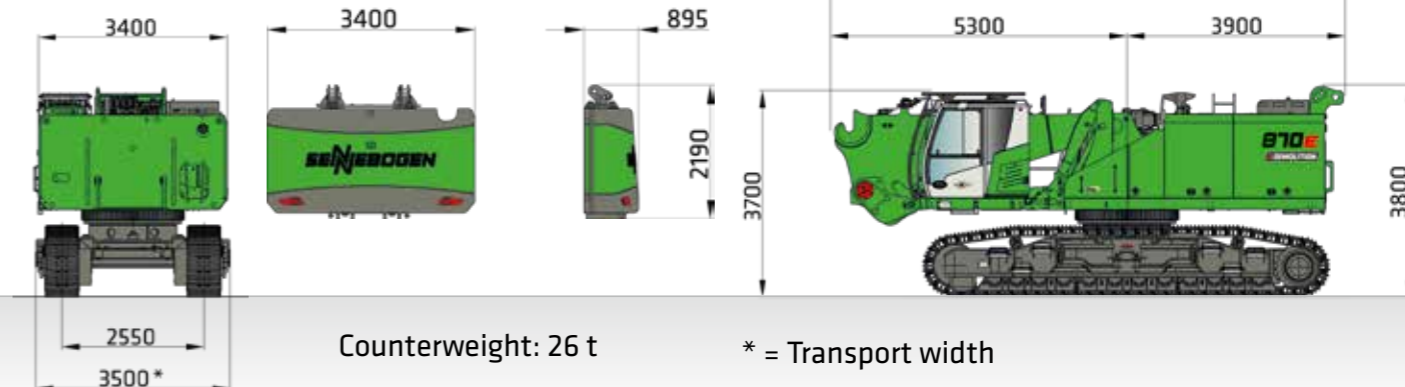
870 DEMOLITION BASIC MACHINE UNDERCARRIAGE RETRACTED WITHOUT COUNTERWEIGHT



870 DEMOLITION BASIC MACHINE UNDERCARRIAGE EXTENDED INCL. COUNTERWEIGHT



870 DEMOLITION BASIC MACHINE INCL. UPPERCARRIAGE RAILING AND COUNTERWEIGHT, TRANSPORT WEIGHT APPROX. 92 t INCL. COUNTERWEIGHT APPROX. 26 t



Counterweight: 26 t

* = Transport width

870 DEMOLITION BASIC MACHINE WITHOUT UPPERCARRIAGE RAILING, WITHOUT COUNTERWEIGHT, TRANSPORT WEIGHT APPROX. 66 t



SELF-ASSEMBLY SYSTEM FOR BALLAST UNLOADING/LOADING

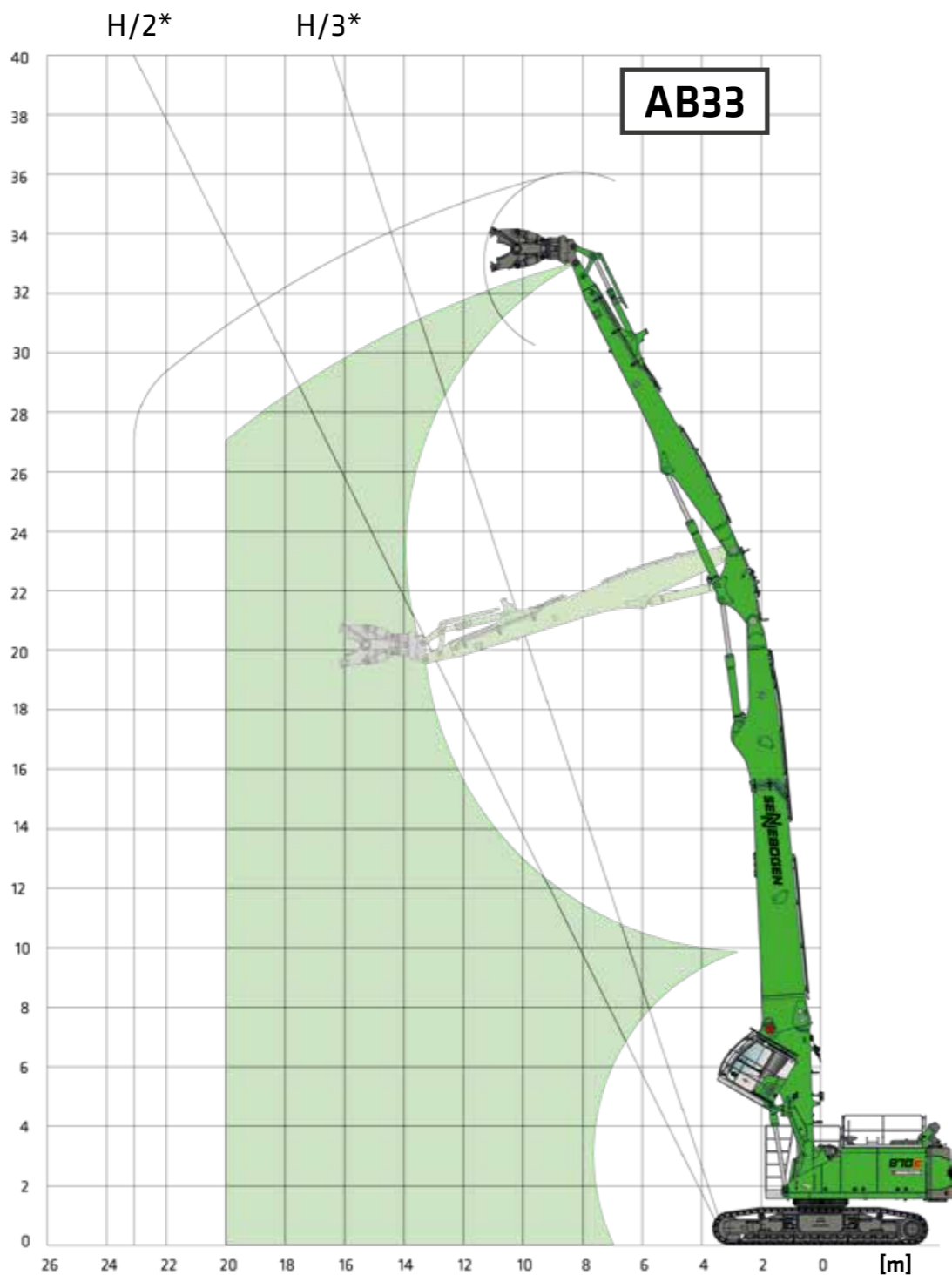


3-PART DEMOLITION BOOM INCL. TRANSPORT FRAME APPROX. 25 t - 28 t

LOAD RATINGS



18 m compact boom
11 m grab stick
2,5 m intermediate piece



* Please note the safety distance according to BGV C22 between the machine and the demolition object (H=demolition height).

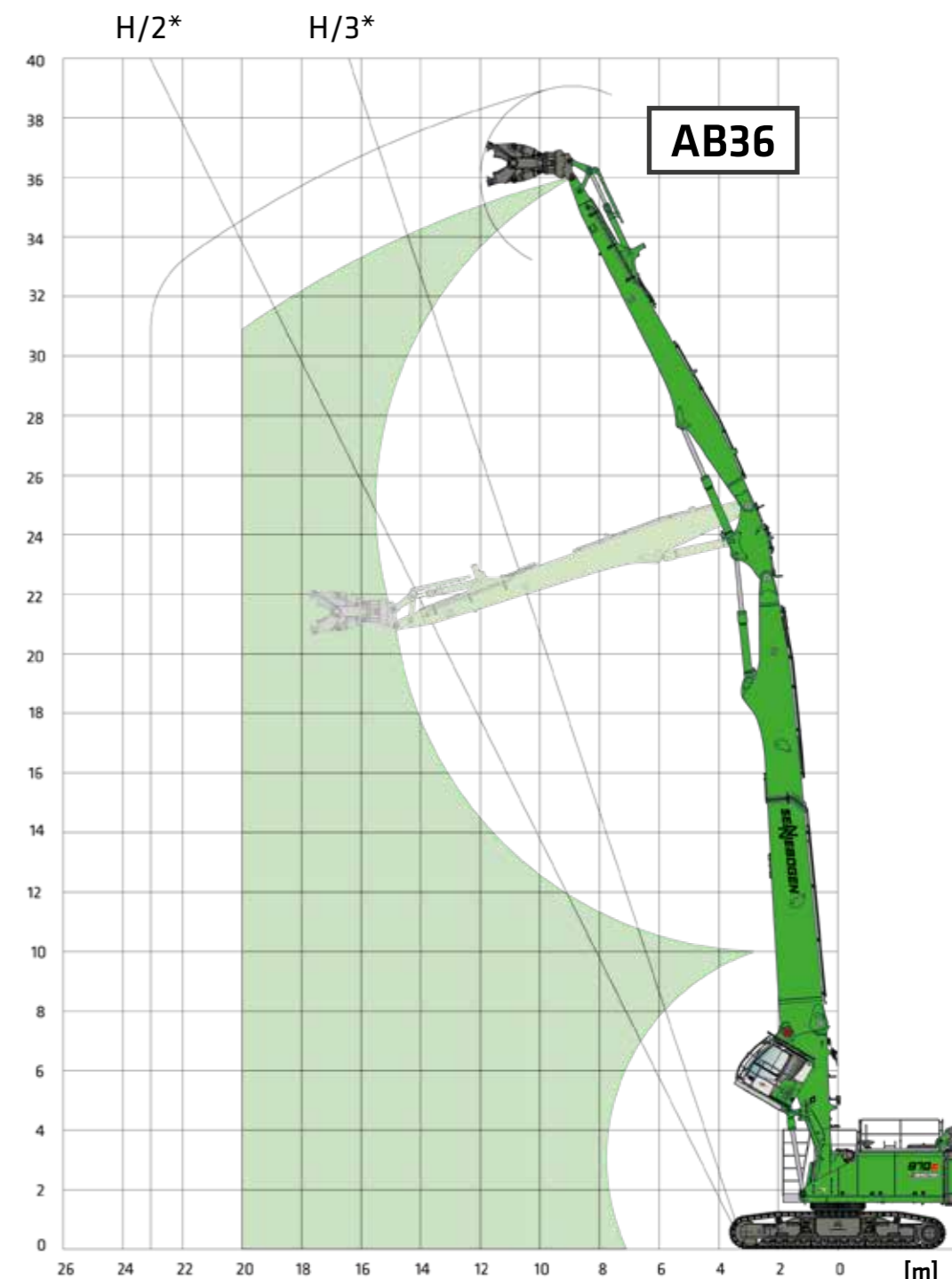
** Total tool weight incl. quick-changer, adapter plate and attachment: max. 4.65 t

Notes:
All load ratings are given in tons (t) brought to bear at the end of the stem, without tools on firm level ground in the work area of 34° on both sides to the undercarriage axle. Working tools such as gripper, magnet, load hook etc. are included in the specified load ratings. The stated values are 75% of the static tipping load and 87% of the hydraulic lifting force according to ISO10567. According to the EU standard EN 474/5, material handling equipment used for hoisting must be equipped with a pipe rupture safety device on the lifting cylinder and an overload warning device.

LOAD RATINGS



19,5 m compact boom
12,5 m grab stick
2,5 m intermediate piece



* Please note the safety distance according to BGV C22 between the machine and the demolition object (H=demolition height).

** Total tool weight incl. quick-changer, adapter plate and attachment: max. 3.65 t


Notes:
All load ratings are given in tons (t) brought to bear at the end of the stem, without tools on firm level ground in the work area of 34° on both sides to the undercarriage axle. Working tools such as gripper, magnet, load hook etc. are included in the specified load ratings. The stated values are 75% of the static tipping load and 87% of the hydraulic lifting force according to ISO10567. According to the EU standard EN 474/5, material handling equipment used for hoisting must be equipped with a pipe rupture safety device on the lifting cylinder and an overload warning device.


TECHNICAL DATA, EQUIPMENT


	DIESEL ENGINE			
	825 DEMOLITION MOBILE	825 DEMOLITION CRAWLER	830 DEMOLITION CRAWLER	870 DEMOLITION CRAWLER
TYPE	Stage V: Cummins B6.7 Rated power: 129 kW/2200 rpm Operating point standard: 129 kW/2200 rpm Operating point ECO: 145 kW/2000 rpm		830 E Demolition K17 Stage V: Cummins B6.7 Rated power: 168 kW/2200 rpm Operating point standard: 186 kW/2000 rpm Operating point ECO: 188 kW/1850 rpm	Stage V: Cummins X12 Rated power: 298 kW/1800 rpm Operating point standard: 298 kW/1800 rpm Operating point ECO: 296 kW/1650 rpm
			830 E Demolition Vario Tool Stage V: Cummins B6.7 Rated power: 209 kW/2000 rpm Stage IIIa: Cummins QSB6.7 Rated power: 164 kW/2000 rpm Operating point standard: 164 kW/2000 rpm Operating point ECO: 170 kW/1850 rpm	Stage IIIa: Cummins QSM11 Rated power: 268 kW/1800 rpm Operating point standard: 268 kW/1800 rpm Operating point ECO: 264 kW/1650 rpm
	Direct injection, turbo charged, reduced emissions, Eco Mode, idle automation, stop automation			
COOLING	Water-cooled, charge-air cooling			
DISPLACEMENT	6,7 l	6,7 l	6,7 l	11,9 l
NUMBER OF CYLINDERS	6	6	6	6
BATTERIES	2 x 155 Ah, main switch	2 x 155 Ah, main switch	2 x 150 Ah, main switch	2 x 180 Ah, battery disconnect switch
ELECTRICAL SYSTEM	24 V	24 V	24 V	24 V
OPTIONS	Engine block heater Diesel refueling pump Jump start pole			

	TANK CAPACITIES			
	825 DEMOLITION MOBILE	825 DEMOLITION CRAWLER	830 DEMOLITION CRAWLER	870 DEMOLITION CRAWLER
FUEL	450 l	450 l	450 l	1000 l
ADBLUE	45 l	45 l	45 l	100 l
HYDRAULIC TANK	310 l	310 l	310 l	900 l
CENTRAL LUBRICATION SYSTEM	Automatic central lubrication for equipment and slewing ring			


	UPPERCARRIAGE			
	825 DEMOLITION MOBILE	825 DEMOLITION CRAWLER	830 DEMOLITION CRAWLER	870 DEMOLITION CRAWLER
DESIGN	Torsion-resistant box design, precision crafted, steel bushings for boom mountings. Very service-friendly design, engine installed in the longitudinal direction			
COOLING SYSTEM	3-circuit cooling system with high cooling output, thermostatically regulated fan drive for oil cooler and water cooler, fan reversal for cleaning			
OPTIONS	LED lighting package Swing bearing brake via foot pedal Fire extinguisher Maritime climate paint Electrical hydraulic tank preheating Low temperature packages SENtrack telematic system Uppercarriage railings for additional safety Magnetic generator 15 kW / 20 kW Fully hydraulically unloadable counterweight to reduce the transport weight			


	ELECTRIC DRIVE			
	825 DEMOLITION MOBILE	825 DEMOLITION CRAWLER	830 DEMOLITION CRAWLER	870 DEMOLITION CRAWLER
OPTIONS	Power: 110 kW / 400 Volt / 50 Hz	Power: 110 kW / 400 Volt / 50 Hz	Power: 132 kW / 400 Volt / 50 Hz Optional: 160 kW / 400 Volt / 50 Hz	Power: 250 kW / 400 Volt / 50 Hz
	Transformer			
	Cable reel			

	HYDRAULIC SYSTEM			
	825 DEMOLITION MOBILE	825 DEMOLITION CRAWLER	830 DEMOLITION CRAWLER	870 DEMOLITION CRAWLER
	Load-sensing/ LDUV hydraulic system, hydraulically operated work functions			
DELIVERY RATE	410 l/min	410 l/min	520 l/min	2 x 475 l/min and 1 x 274 l/min for rotary drive in the closed circuit
OPERATING PRESSURE	max. 350 bar			
LOAD LIMIT CONTROL	Optimized load limit control; in order to use the best possible operating point of the diesel engine at all times, even under full load			
CONTROL SYSTEM	Proportional, precision hydraulic actuation of work movements, 2 hydraulic servo joysticks for the work functions, additional functions via switches and foot pedals			
SAFETY	Hydraulic circuits safeguarded with safety valves			
	Pipe fracture safety devices			
	Emergency lowering of the equipment with the engine switched off			
OPTIONS	Tool control for programming pressure/volume flow of up to 10 tools			
	3 µm hydraulic micro-filter SENNEBOGEN HydroClean			
	Bio-oil filling			
	Load torque indicator with load warning			<i>Load torque indicator as standard</i>
	Overload safeguard with shutdown			<i>Overload protection as standard</i>


	SLEWING DRIVE			
	825 DEMOLITION MOBILE	825 DEMOLITION CRAWLER	830 DEMOLITION CRAWLER	870 DEMOLITION CRAWLER
GEARS	Compact planetary gear with bent-axis hydraulic engine, integrated brake valves			
PARKING BRAKE	Spring-loaded multi-disk brake			
SLEWING RING	Externally geared slewing ring with 360° protection and pinion lubrication			
SLEWING SPEED	0-8 min ¹ , variable	0-8 min ¹ , variable	0-8 min ¹ , variable	0-5 min ¹ , variable

	CAB 			
	825 DEMOLITION MOBILE	825 DEMOLITION CRAWLER	830 DEMOLITION CRAWLER	870 DEMOLITION CRAWLER
CAB TYPE	Maxcab, elevating by 2.80 m / tiltable by 30°			
CAB FEATURES	Windscreen/roof window made of bullet proof glass as standard, windscreen wipers for lower windscreen/roof window, sliding door incl. sliding window, vibration-damped, tinted safety glass, windshield can be opened, roof window, windscreen wipers, radio preparation, air-sprung comfort seat, joystick steering, 12 V/24 V connections, SENCON			
OPTIONS	Polycarbonate safety glass			
	Sunblind for skylight and windshield			
	(FOPS) protective roof grating		<i>(FOPS) protective roof grating as standard</i>	
	Protective front guard		<i>Protective front guard as standard</i>	
	Carbon filter for circulation/outside air			
	Air-conditioned seat			
	Auxiliary heating system			
	Cooling box			
	Radio			
	Protective ventilation system			
SENNEBOGEN comfort audio system				

	UNDERCARRIAGE			
	825 DEMOLITION MOBILE	825 DEMOLITION CRAWLER	830 DEMOLITION CRAWLER	870 DEMOLITION CRAWLER
TYPE	Strong MP26 mobile undercarriage with integrated 4-point outrigger, steering axle as hydraulically lockable pendulum axle, pendulum axle cylinder with pipe-fracture safety valves, all-wheel drive via an adjustable hydraulic motor with directly attached, automatically actuated brake valve and 2-stage power shift transmission, strong planetary axles with integrated steering cylinders, service brake with 2-circuit system with spring-loaded multi-disc brake, Solid-rubber tires 10.00-20, 8x	T31/350 wide-gauge telescopic undercarriage with hydraulic or mechanical track adjustment from 2.98 – 4.2 m, with hydraulic traction drive, spring-loaded, hydraulically ventilated multi-disc brakes, hydraulic brake valves	T41/380 wide-gauge telescopic undercarriage with hydraulic track adjustment from 3.0 – 4.5 m, with hydraulic traction drive, spring-loaded, hydraulically ventilated multi-disc brakes, hydraulic brake valves	T102/420 wide-gauge crawler telescopic undercarriage with maintenance-free crawler track with 600 mm triple grouser shoes, canted, in stable, torsion-resistant box construction with hydraulic traction drive integrated into the chassis frame by an axial piston motor via compact planetary gears on each side of the chassis. Track adjustment 3.5 – 4.8 m.
BRAKES	Multi-disc brakes, hydraulic brake valves			
TRAVEL SPEED	Stage 1: 0 – 7 km/h Stage 2: 0 – 20 km/h	Stage 1: 0 – 2 km/h Stage 2: 0 – 3.5 km/h	Stage 1: 0 – 1.6 km/h Stage 2: 0 – 3 km/h	Stage 1: 0 – 1.6 km/h Stage 2: 0 – 3 km/h
OPTIONS	Pneumatic tires 10.00-20, 8x	Wide-gauge crawler chassis R35/340	Water spray system for binding dust: Water connection on the undercarriage – tubing up to the handle end incl. nozzles	Water spray system for binding dust: Water connection on the undercarriage – tubing up to the handle end incl. nozzles
	Sliding panel in addition to 4-point support (front or rear)	Chain scraper	Chain scraper	Chain scraper
	Individual outrigger control			
	Travel drive/shunting coupling protection	Maintenance-free B60 crawler track with 700 mm canted triple grouser shoes		
	Pipe pylon with 0.5 m C8 pylon or 1.0 m pylon			

	EQUIPMENT			
	825 DEMOLITION MOBILE	825 DEMOLITION CRAWLER	830 DEMOLITION CRAWLER	870 DEMOLITION CRAWLER
REACH*	12 m	14 m	10 – 17 m	20 m
MAXIMUM BOLT HEIGHT	13 m	15 m	12 – 23 m	33 / 36 m
CYLINDERS	Hydraulic cylinders with high-quality sealing and guide elements, end position damping, sealed mounting points			
OPTIONS	Ball valves in the grab hydraulic lines for quick and easy grab switching			
	Adjustable stroke limiter/handle limiter, e. g. in the hall			
	Additional LED lights			
	Stick mounted camera			

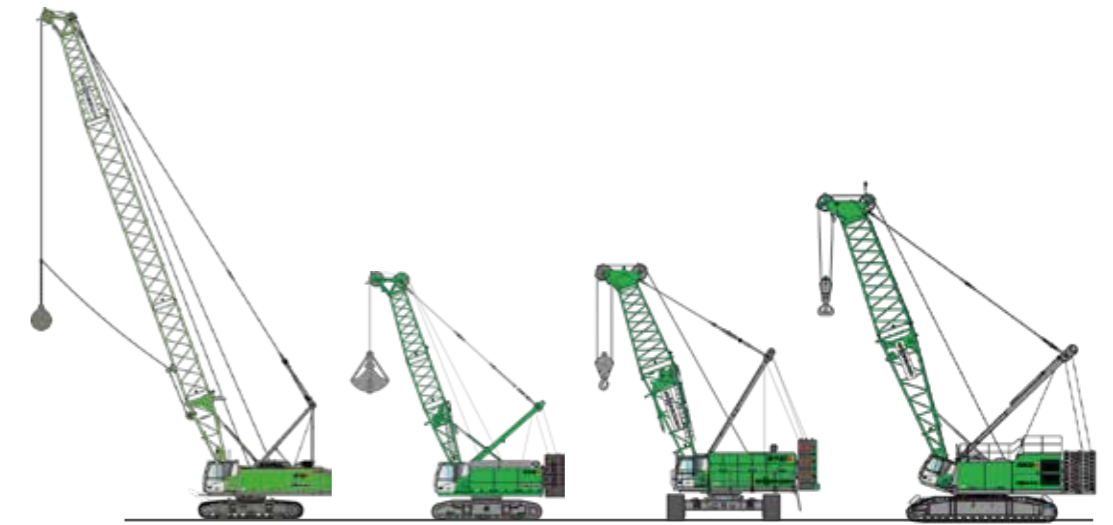
* to bolt point

	OPERATING DATA			
	825 DEMOLITION MOBILE	825 DEMOLITION CRAWLER	830 DEMOLITION CRAWLER	870 DEMOLITION CRAWLER
MASS	28.5 t with MP26 undercarriage with 4-point outrigger incl. K12 ULM and quick-changer	38 t with T31/350 crawler undercarriage incl. K14 ULM and quick-changer	K17 ULM: 48 t with crawler undercarriage T41/380 incl. K17 ULM and quick coupler EA12: 50.5 t with crawler undercarriage T41/380 and Vario Tool equipment quick coupler AB17: 51 t with crawler undercarriage T41/380 and Vario Tool equipment quick coupler AB23: 52 t with crawler undercarriage T41/380 and Vario Tool equipment quick coupler	117 t with T102/420 crawler undercarriage incl. AB36 and quick-changer
NOTE	Operating weight varies by model and equipment.			







THE RIGHT MACHINE FLEET FOR YOUR DEMOLITION SITE



Use the right solution for all demolition tasks – whether with hydraulic demolition machines or a duty cycle crane with conventional wrecking ball.







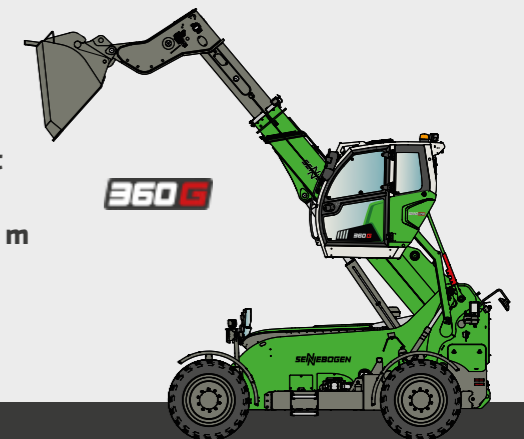
670E **6100E** **6140E** **6300E**

	MAX. LOAD CAPACITY	70 t	100 t	140 t	300 t
	OPERATING WEIGHT	approx. 70 t	approx. 91 t	approx. 126 t	approx. 255 t
	MAX. MAIN BOOM LENGTH	56.9 m	63.5 m	63.5 m	80.3 m
	ENGINE (STAGE V)*	321 kW	451 kW	563 / 708 kW	570 / 708 / 840 kW
	WINCHES	max. 200 kN	max. 300 kN	max. 350 kN	max. 450 kN
	OPTION	HD			

THE PERFECT ADDITION TO YOUR FLEET

The multifunctional 360 G telehandler with a lifting height of up to 8.5 meters and a load capacity of up to 6 t for demanding and tough conditions in the construction site.

-  **Max. Load capacity 6 t**
-  **Operating weight 12.5 t**
-  **Max. Lifting height 8.5 m**
-  **Engine 123 kW**







WE ARE A FAMILY-OWNED COMPANY

WITH DECADES OF EXPERIENCE –
YOU CAN RELY ON OUR TECHNICAL SOLUTIONS.

Since 1952, we stand for customer-specific mechanical engineering and have successfully established ourselves as market leader in many industries of crane technology and demanding material handling worldwide.



GENERAL MANAGEMENT: ALFRED ENDL, THORSTEN RESCH, SEBASTIAN SENNEBOGEN, ERICH SENNEBOGEN, WALTER SENNEBOGEN, ANTON SENNEBOGEN, DR. ANDREAS MAURER (from left to right)



FAMILY SENNEBOGEN: ERICH, SEBASTIAN, ANTON, VICTORIA, ALEXANDER, WALTER (from left to right)

WE STAND FOR

STABILITY AND RELIABILITY

Our stable and continuous development results in maximum reliability and performance throughout the entire group.

ORGANIC GROWTH AND INDEPENDENCE

To us, this means focusing on the future. For our partners and customers, it stands for long-term reliability and security.

A STRONG HERITAGE SECURES THE FUTURE

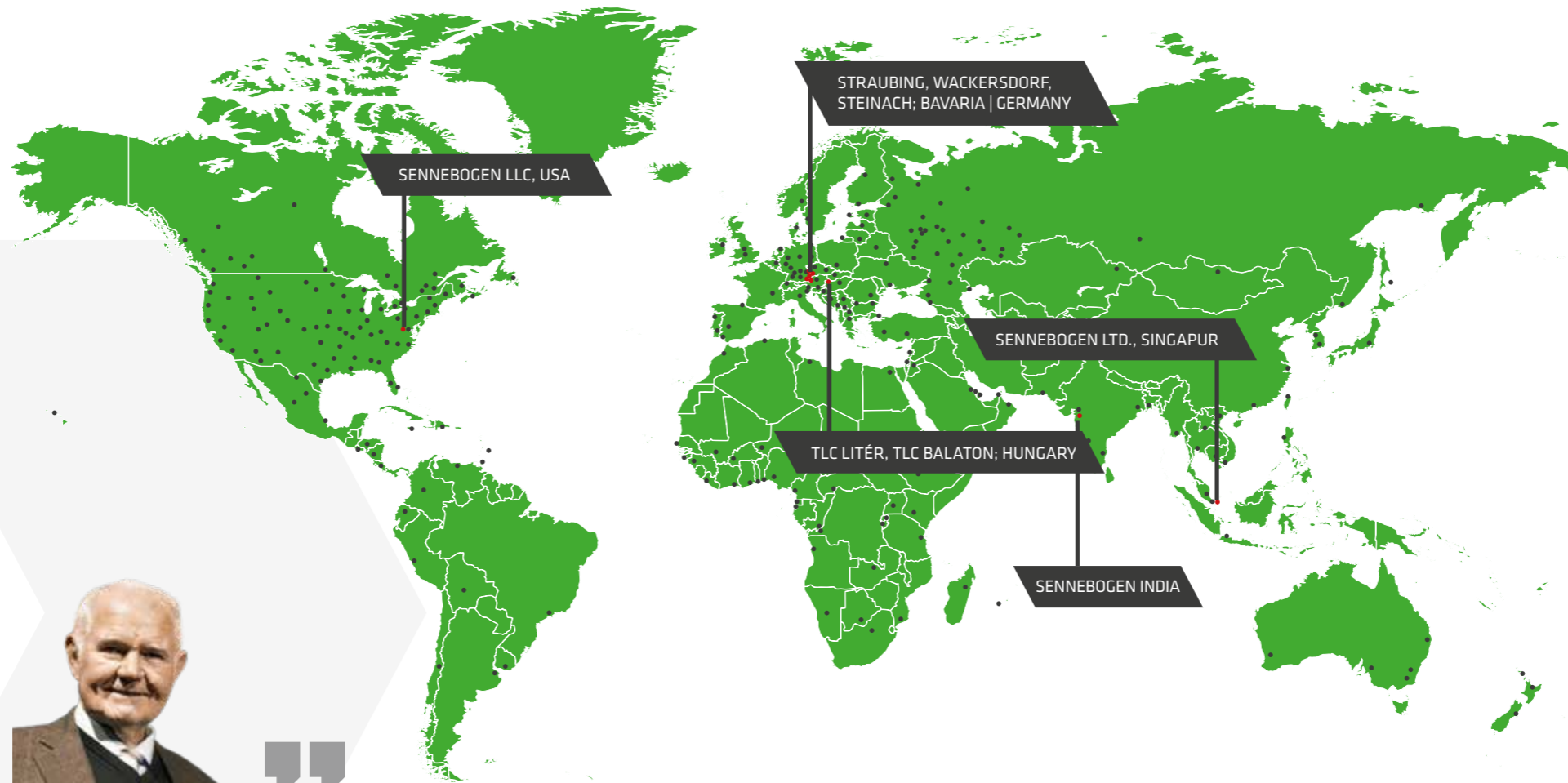
Thanks to solid and strong financial management, the group of companies has developed into a leading manufacturer on the market. Continuous investment in our companies ensures that we remain ahead of the game.

PROXIMITY TO OUR PARTNERS

Meeting our customers, dealers, suppliers or employees in person helps us to improve every day.

WORLDWIDE CUSTOMER FOCUS

- Locations and branches
- Sales and service partners



“
If you don't change anything,
you will not improve anything.”

Erich Sennebogen, 1931 - 2011
Founder

REPRESENTED WORLDWIDE
WITH OUR LOCATIONS AND
SALES PARTNERS.



WE VALUE EXCELLENT SERVICE

Even after purchasing a SENNEBOGEN machine, we offer our customers comprehensive services - everything from a single source.

Further information on our range of services can be found here.



WE ENSURE MAXIMUM AVAILABILITY.

With the Customer Service Center, we bundle all service activities centrally at one location. A tailor-made service offering for our customers is important to us.

- /// **SERVICE KITS** - for easy and preventive maintenance
- /// **INSPECTION KITS** - service package for the first 2,000 operating hours
- /// **WARRANTY** - component warranty can be selected individually according to customer requirements



mySENNEBOGEN

Central portal to SENNEBOGEN's digital world

- /// **SENtrack**
Telematic system for intelligent fleet management
- /// **SENNEBOGEN TROUBLESHOOTER**
software solution for guided troubleshooting
- /// **REMOTE SUPPORT**
Audiovisual guide for service technicians
- /// **SUPPORT TICKET SYSTEM**
Intuitive ticket system for direct contact with service personnel
- /// **FLEET MANAGEMENT**
Efficient monitoring of your machine fleet

SENNEBOGEN
Academy

The SENNEBOGEN Academy offers a wide range of training courses for operators of material handlers, telehandlers, cranes and duty cycle cranes - so that they can get the most out of their machines.

OUR SENNEBOGEN ACADEMY OFFERS:

- /// Operator training
- /// Driving licenses
- /// Technical training
- /// E-courses





SENNEBOGEN used

USED MACHINES WITH HIGH QUALITY

Used machines have lower investment costs and still offer a high quality and durability! Find your used machine at SENNEBOGEN used!

➔ used.sennebogen.com

SENNEBOGEN rental

Together with SENNEBOGEN subsidiaries and the extensive network of SENNEBOGEN rental partners worldwide, SENNEBOGEN Rental offers the largest fleet of rental machines for material handlers and telehandlers on the market. If you want to rent a machine, we will find the right solution together.

YOUR ADVANTAGES OF RENTING FROM SENNEBOGEN RENTAL

- Experience and expertise directly from the manufacturer
- Comprehensive advice on all aspects of your rental operation – from machine selection to attachment and rental
- Find the perfect machine for your project
- Extremely short response times thanks to our worldwide network of SENNEBOGEN rental partners
- Excellent service and support throughout the entire deployment
- Option to buy from rent

➔ www.rental.sennebogen.com





SENtrack



MOVE BIG THINGS WITH US



over **73**
years of
experience

100 %
family owned
company

over **2200**
employees worldwide

5
production plants
in Germany

over **180**
sales and service
partners worldwide

27
different material
handling machines

FLEET MANAGEMENT FOR PROFESSIONALS

1. REDUCE SERVICE COSTS

Monitor the machine and its main operating parameters (temperatures, consumption). If key figures deviate significantly from the target value, the user is informed immediately.

2. REDUCE CONSUMPTION

Easily identify and optimize idle times or change set parameters when machines are underloaded to reduce consumption.

3. IMPROVE PRODUCTIVITY

With just a few clicks, you can identify and optimize machine capacity, analyze routes and thus make your processes more profitable.

4. SAFEGUARD YOUR INVESTMENT

Alarm messages inform you about critical machine conditions. In the event of irregular movements, the machine can also easily be deactivated remotely.

www.sennebogen.com/sentrack



Telehandler
4-6 t

Balancer
130-300 t

Material handler
17-420 t

Duty cycle crane
30-300 t

Crawler crane
50-200 t

Telescopic crane
16-200 t

Port crane
300 t

This catalog describes machine models, the scope of equipment of individual models, and configuration options (standard equipment and optional equipment) of the machines delivered by SENNEBOGEN Maschinenfabrik GmbH. Machine illustrations may contain optional and supplementary equipment. Actual equipment may vary depending on the country to which the machines are delivered, especially in regard to standard and optional equipment. All product designations used may be trademarks of SENNEBOGEN Maschinenfabrik GmbH or other supplying companies, and any use by third parties for their own purposes may violate the rights of the owners.

Please contact your local SENNEBOGEN sales partner for information concerning the equipment variants offered. Requested performance characteristics are only binding if they are expressly stipulated upon conclusion of the contract. Delivery options and technical features are subject to change. All information is supplied without liability. Equipment is subject to change, and rights of advancement are reserved. © SENNEBOGEN Maschinenfabrik GmbH, Straubing, Germany. Reproduction in whole or in part only with written consent of SENNEBOGEN Maschinenfabrik GmbH, Straubing, Germany.

SENNEBOGEN

**SENNEBOGEN
Maschinenfabrik GmbH**
Hebbelstraße 30
94315 Straubing, Germany
☎ +49 94 21 540-0

➔ www.sennebogen.com

SENNEBOGEN LLC
1957 Sennebogen Trail
Stanley, North Carolina 28164, USA
☎ +1 704 347-4910
✉ sales@sennebogenllc.com
www.sennebogen-na.com

SENNEBOGENPte. Ltd.
25 International Business Park
04-11/12 German Centre
Singapore 60 99 16
☎ +65 6562 826-0
✉ info@sennebogen.asia
www.sennebogen.asia

MOVE BIG THINGS